

BOARD OF DIRECTORS MEETING

November 15, 2022



PLEDGE OF ALLEGIANCE

I pledge allegiance to the flag of the United States of America, and to the republic for which it stands, one nation under God, indivisible, with liberty and justice for all.



PLEDGE OF ALLEGIANCE TO THE TEXAS FLAG

Honor the Texas flag; I pledge allegiance to thee, Texas, one state under God, one and indivisible.



2

Public Comment





3

Consider Approval of the Minutes from the Meeting Held on October 18, 2022





4

Executive Session



5

Discuss and Consider Approval of General Manager Compensation Package for Remainder of 2022 and 2023

Kathryn Long, Partner, Thompson & Horton, LLC



6

Consider Approval of Consent Agenda



Consider Approval of Conservation Program Support Expenditures

Tarrant County Master Gardener Association

- Water conservation program services
- Total expenditure amount: \$56,000 annually

Consider Approval of Operations and Maintenance Expenditures

Davis Crane

- ITB No. 23-024 Crawler Crane and Operator for FY23 Pipe Replacement
- Total expenditure amount: \$80,000

KW Power Services

- Stand-by Generator Preventative Maintenance Contract
- Total expenditure amount: \$77,793

Swift Corporation, LLC

- ITB No. 23-023 Consider Approval of Contract for the construction of a Security Fence at the Bridgeport Spillway
- Total expenditure amount: \$124,450

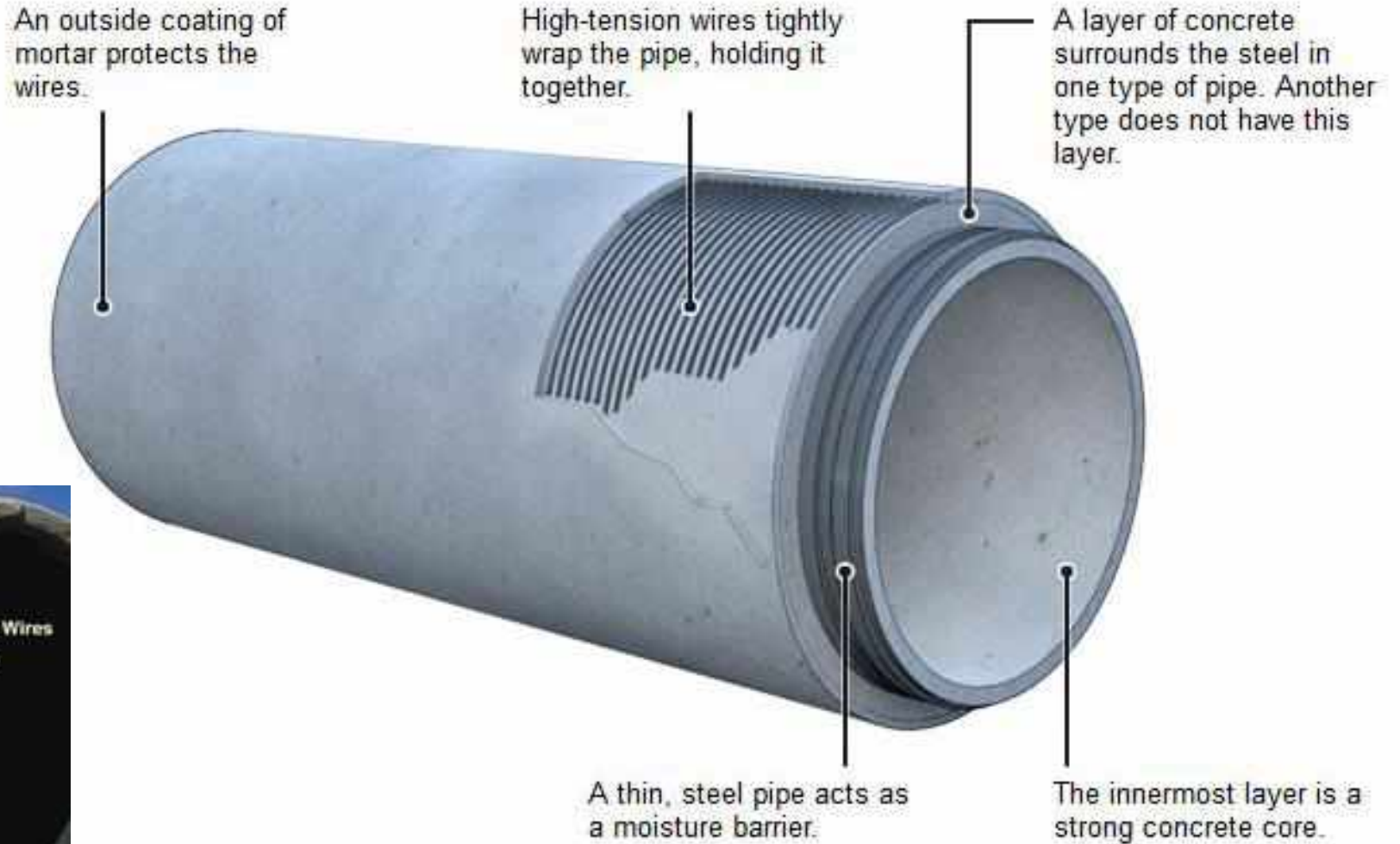
7

Consider Approval of Contract with Pipeline Inspection and Condition Analysis Corporation for Condition Assessment of 72-inch Cedar Creek Pipe

Jason Gehrig, *Infrastructure Engineering Director*

Goal:

Moving beyond just identifying locations and counts of wire breaks, to better determining remaining structural strength of the pipe



PICA

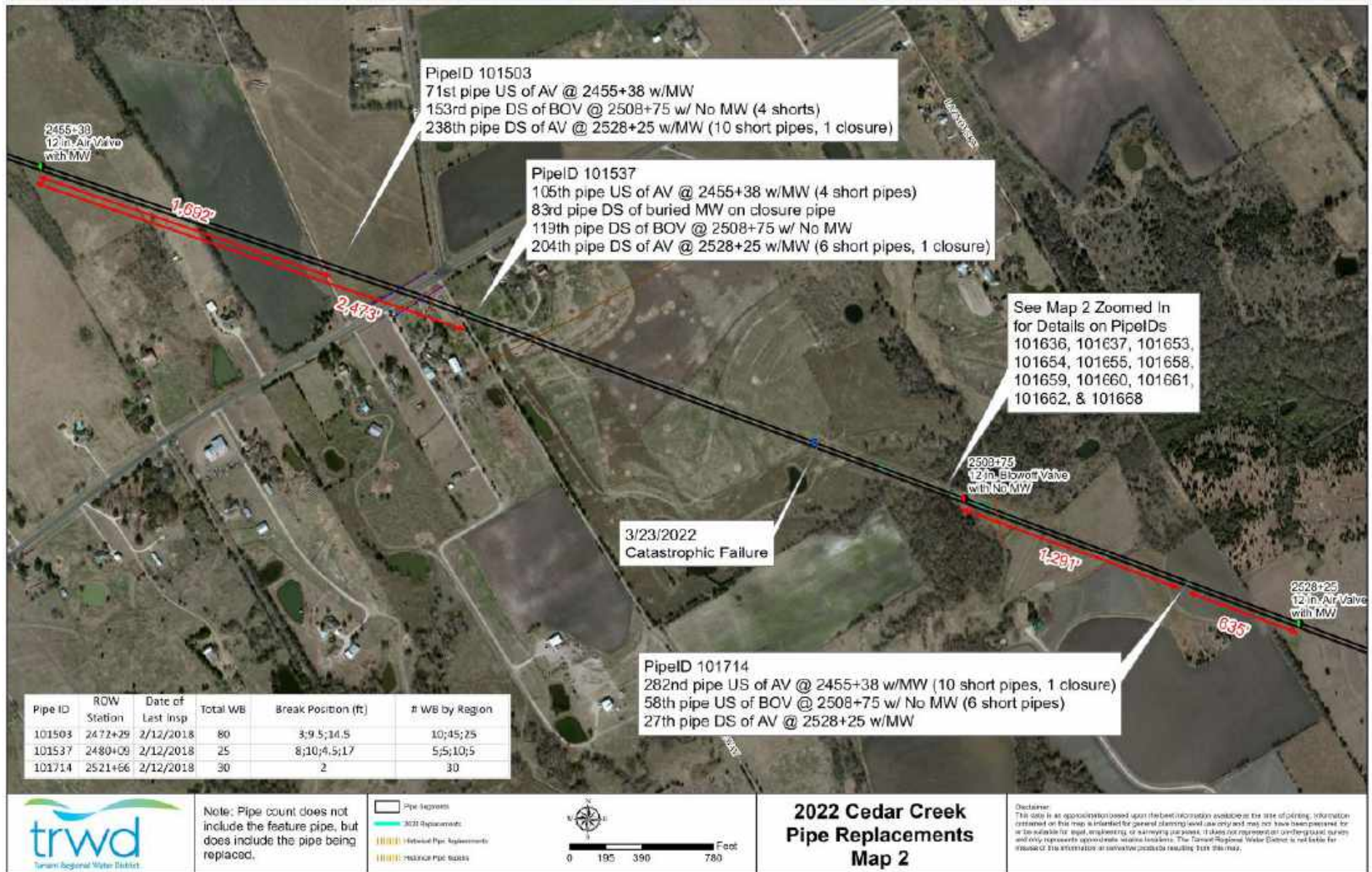
Concrete Pressure Pipe Condition Assessment Tool



2022 Forensic Investigation & Hydrostatic Pressure Testing



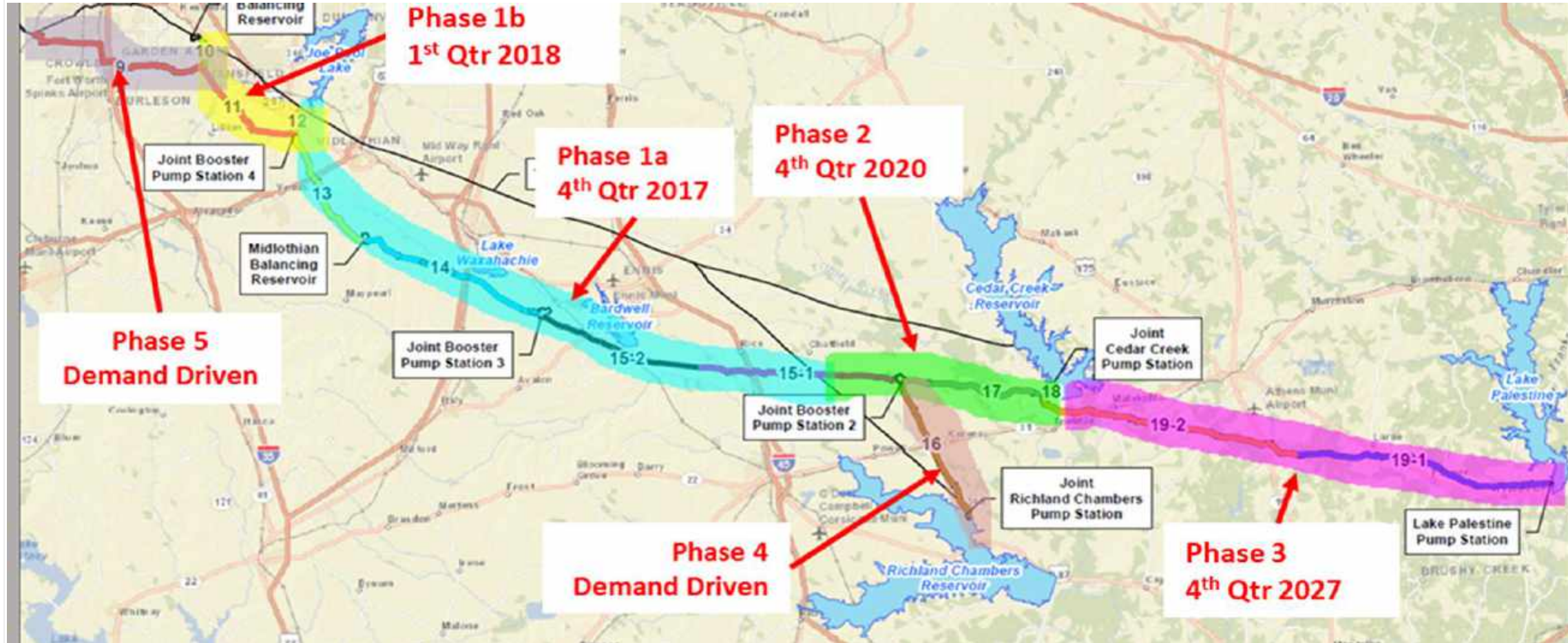
2023 PICA Inspection Location



8

Consider Approval of Contract Amendment with CDM Smith for Joint Booster Pump Station Number 3 Record Drawings Preparation for the Integrated Pipeline Project

Ed Weaver, IPL Program Manager





ACAD Rev. 18.16 (LMS Tech)
 User: DOUGNEY\jfl
 Date: 01/15/2015 10:00:00 AM
 Job: 01-18-2015
 Project: 1 - TRWD

NO.	ISSUE	BY	DATE	JOB NO.
1	RC P0041 AIR COMPRESSOR MODIFICATION	JLD	12/19/14	89917
2	RC P0043	SSH	2/8/18	
		SSH	4/20/18	

DESIGNED BY	J DOUGNEY
CHECKED BY	J DOUGNEY
DATE	01/15/2015
PROJECT	01-18-2015
FILE NAME	



TARRANT REGIONAL WATER DISTRICT AND CITY OF DALLAS, TEXAS
 INTEGRATED PIPELINE PROJECT
 JBS BOOSTER PUMP STATION
 ELECTRICAL
 LOWER AND GROUND LEVEL
 RECEPTACLE PLAN

CDM Smith
 100 Thompson Street, Suite 800
 Fort Worth, TX 76102-3670
 Tel: (817) 882-8727

CDM Smith Inc
 Firm No. F-3043

THE SEAL THAT ORIGINALLY APPEARED ON THIS DOCUMENT WAS AUTHORIZED BY HOWARD S. PETROVIC, P.E. TEXAS No. 98238, TEXAS ENGINEERING FIRM No. F-2043 AND APPLIES ONLY TO THE BASELINE DOCUMENT. ALTERATION OF A SEALED DOCUMENT WITHOUT PROPER NOTIFICATION OF THE SEALING ENGINEER IS AN OFFENSE UNDER THE TEXAS ENGINEERING PRACTICE ACT.

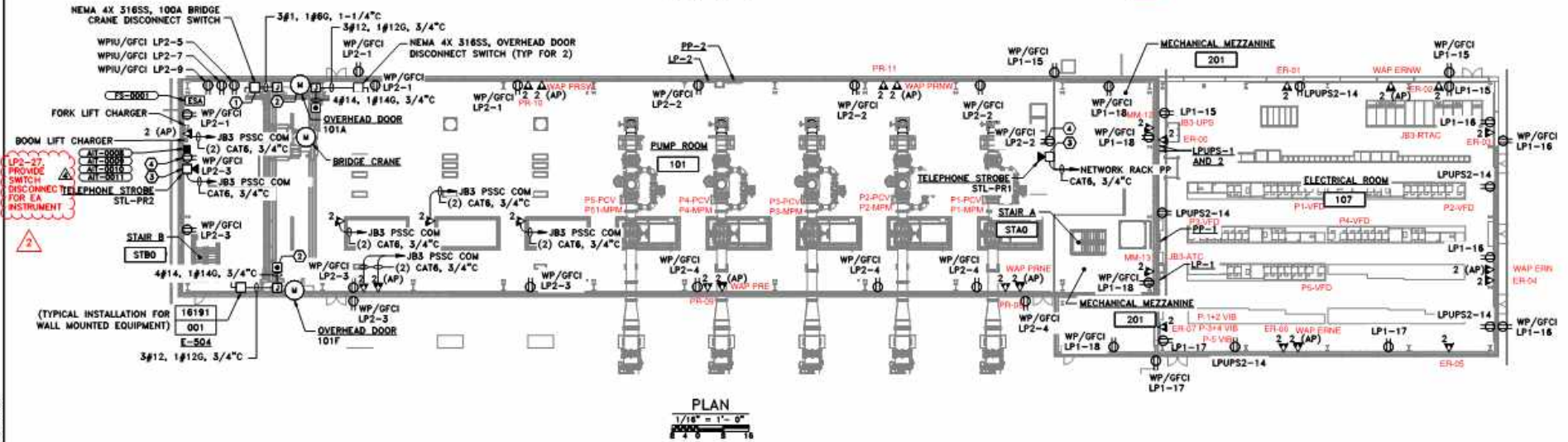
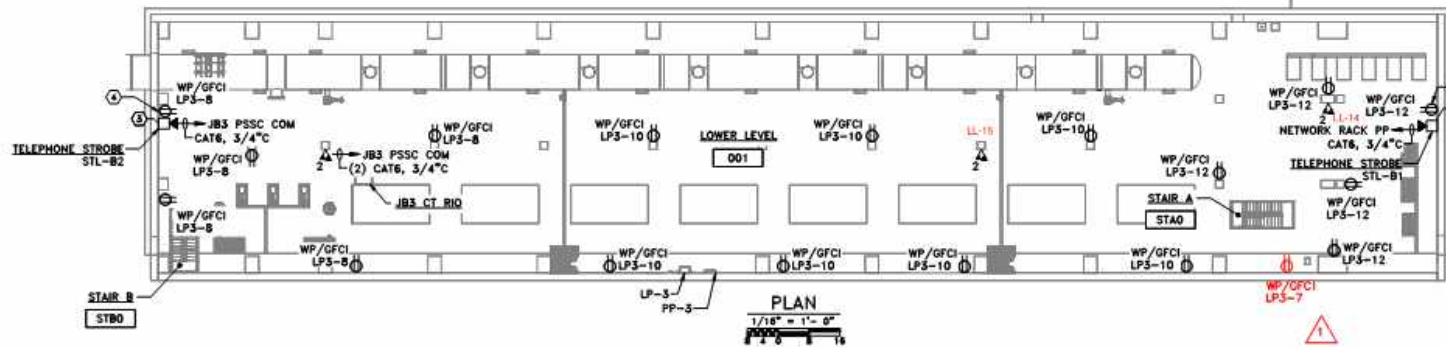
RECORD DOCUMENT ISSUED ON JANUARY 15, 2018

VERIFY SCALE	0
Bar is one inch on original drawing. If not one inch on this sheet, adjust scale.	
SHEET	EA-105
SEQ.	420 OF 652

ISSUED FOR RCP

- GENERAL
- REFERENCE PANELBOARD SCHEDULES ON SHEETS E-609 THROUGH E-614 FOR WIRE AND CONDUIT DETAILS NOT SHOWN ON THIS SHEET.
 - CONTRACTOR SHALL COORDINATE THE EXACT DATA OUTLET LOCATIONS WITH OWNER.
 - UTILIZE CABLE TRAY 'C' FOR ROUTING CABLES FROM NETWORK RACK PP TO DATA OUTLETS IN THE ELECTRICAL ROOM, PUMP ROOM, AND LOWER LEVEL UNLESS NOTED OTHERWISE.

- NOTES BY SYMBOL
- COORDINATE WITH OTHER DIVISIONS THIS CONTRACT ON BRIDGE CRANE TERMINATION POINT. PROVIDE ALL INCIDENTALS FOR CONNECTION.
 - COORDINATE WITH OTHER DIVISIONS THIS CONTRACT FOR MOTORIZED OVERHEAD DOOR OPERATOR TERMINATION POINT. PROVIDE ALL INCIDENTALS FOR CONNECTION.
 - PROVIDE ARTKEL V3 SIP TELEPHONE STROBE OR EQUAL. PROVIDE MANUFACTURER RECOMMENDED AC-DC OUTLET ADAPTER FOR CONNECTING STROBE TO WALL RECEPTACLE. MOUNT TELEPHONE STROBE 8 FEET ABOVE FINISHED FLOOR.
 - MOUNT RECEPTACLE ADJACENT TO TELEPHONE STROBE FOR POWER CONNECTION TO STROBE POWER ADAPTER.

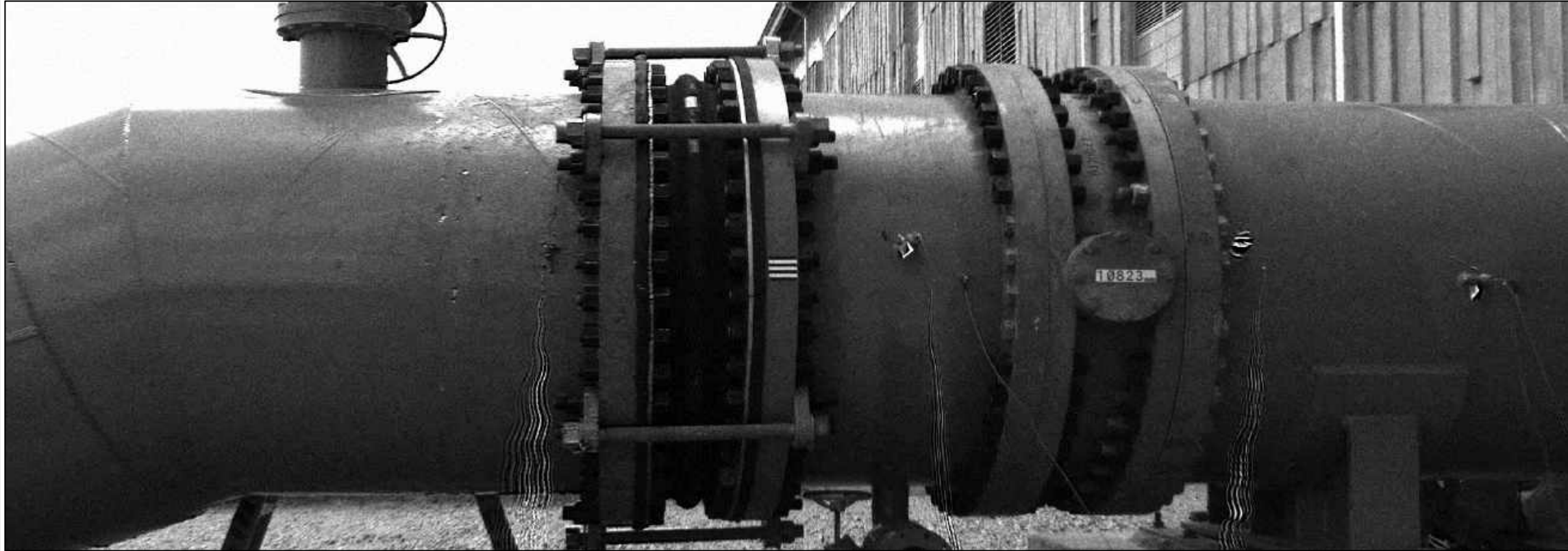


ACAD Rev. 18.16 (LMS Tech)
 User: DOUGNEY\jfl
 Date: 01/15/2015 10:00:00 AM
 Job: 01-18-2015
 Project: 1 - TRWD

Pump Vibration Shaft Shuttle

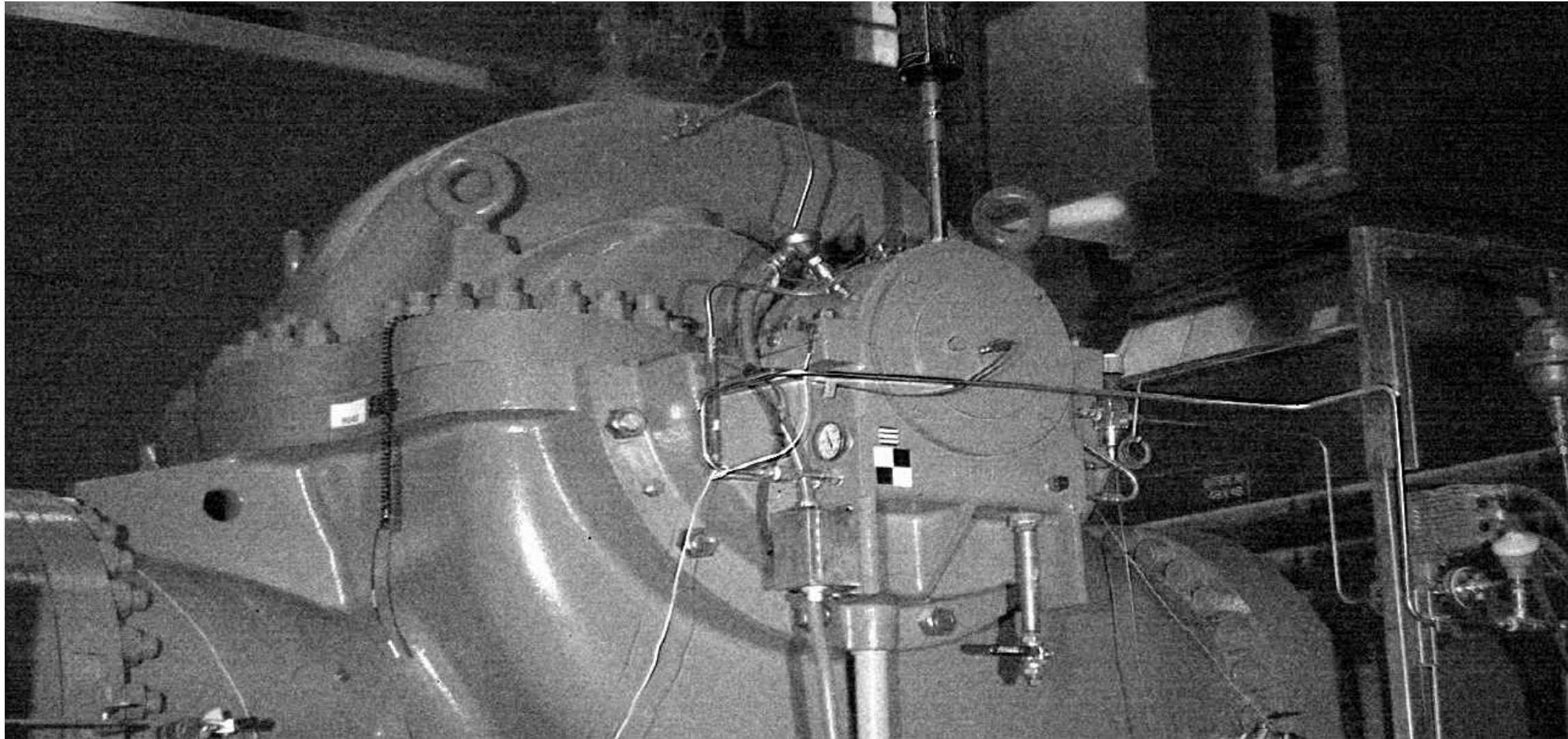


Suction Piping Vibration at 13.5 Hz (1x running speed)

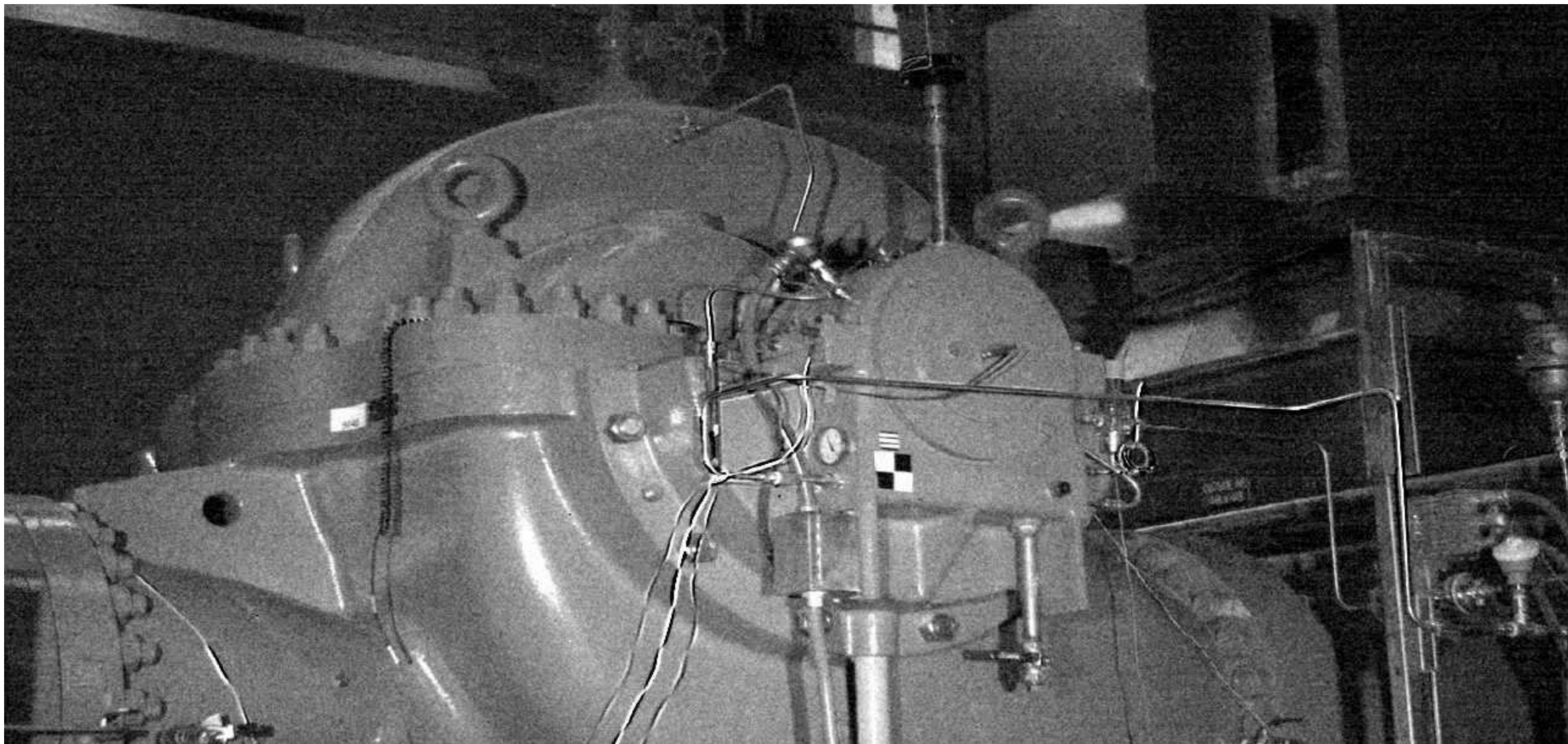


Relative movement at flexible joint, as expected

Pump OB Bearing Housing 13.57 Hz (1X Running Speed)



Pump Vibration (OBB View) @67.6 Hz (Vane Pass)



Horizontal Split Case Pump



Rotating Element



Impeller -- Discharge



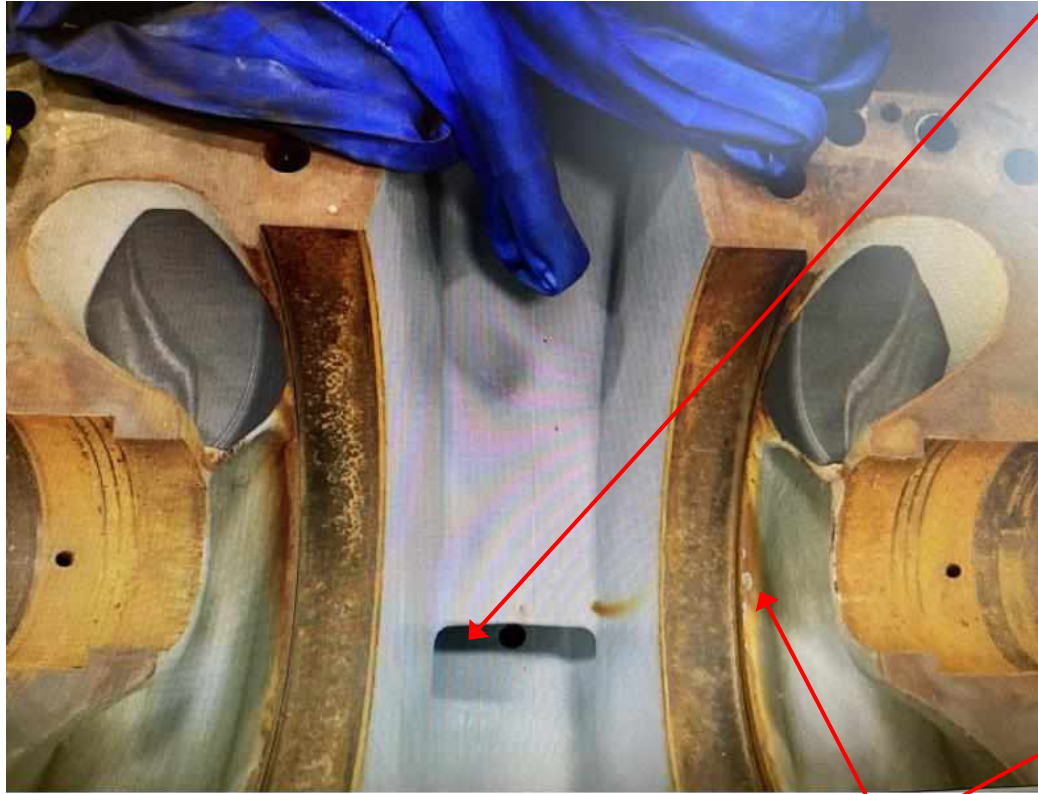
Impeller -- Suction



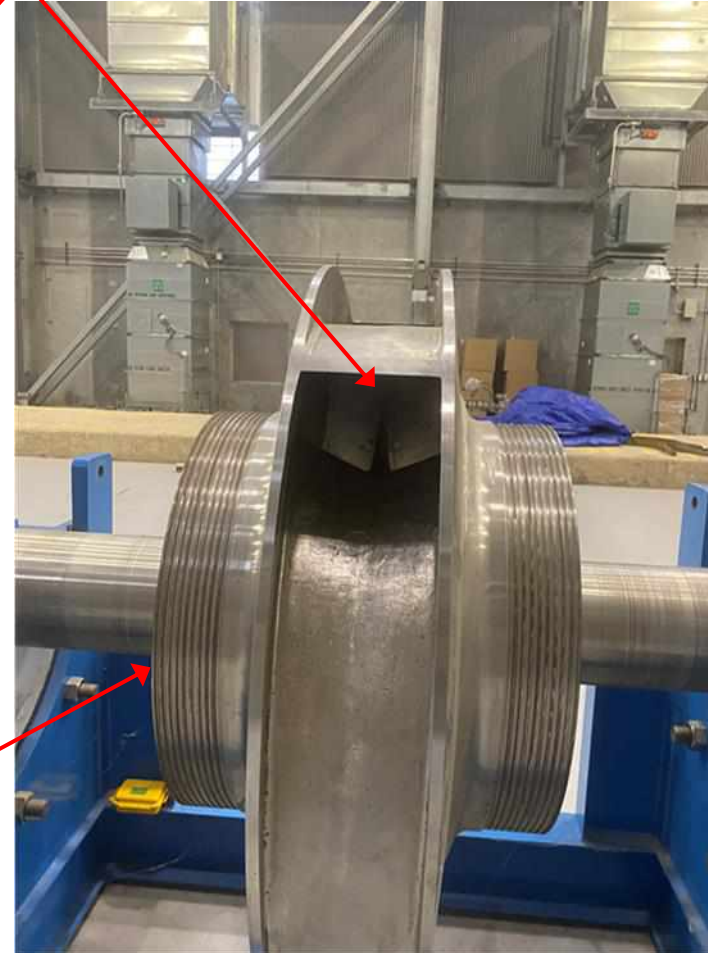
Horizontal Split Case Pump



Interior Top Section Suction Inlet and Discharge



Impeller Discharge



Impeller Suction

9

Consider Approval of Settlement of Claims in the Integrated Pipeline Project - Bancroft (865, 920) Lawsuit

Steve Christian, *Real Property Director*

Staff Update

Conservation Programs Update

Linda Christie, *Government Affairs Director*

Regional Conservation



Spring



Summer

Regional Conservation



Recent Survey Results

- 65% Effective Message
- 54% Changed Behavior
- 84% Less Water on Lawn
- 59% Future Water Concerns
- 72% Efforts Should Continue
- 76% Taught in Public Schools

Regional Conservation



6th Annual Water Efficient Recognized Green Professionals Program



Regional Conservation

Weekly Watering Advice Service

15,000+ Subscribers



TRWD Conservation

- 2021 Conservation Savings = 20.7 billion gallons or 18%

2022 Residential
Sprinkler Evaluations:
2,000+

New in 2022:
Landscape Consultations



Learn & Grow: Adult Education & Outreach

- 11,000+ reach
- 130+ classes and events



UPCOMING EVENTS

Smart Gardening for Conscious North Texans

OCT 18
Rain Gardens

OCT 22
Winter Preparedness Part 1

NOV 3
Texas Trees

NOV 5
Lake Arlington Garden
Wildflower Meadow Seeding

SaveTarrantWater.com

trwd Tarrant Regional Water District

- SaveTarrantWater.com
- Monthly Newsletter
- YouTube Videos
- Facebook, Twitter, Instagram



Class Video

NEW UPLOAD

SaveTarrantWater.com

GARDENING FOR TEXAS POLLINATORS

trwd

Gardening for Pollinators
Add life and color to your yard by creating a pollinator garden!

[WATCH NOW!](#)

Using Your Rain Barrel

We are finally getting rain to fill our barrels! Whether you purchased a pre-made rain barrel or made one yourself, **this easy guide** will help you explore ways to use your rainwater harvesting barrel. Using rain barrels to harvest rainwater is a great way to conserve water and save on your water bill.

[Visit the Blog](#)

Youth Education Programs

Reach:

- 25K+ students, teachers, & parents
- 18 customer cities



Youth Education Programs

Programs:

- Hands-on lessons by TRWD educators
- Professional theater programs
- Teacher-led programs with online curriculum



New Innovative Youth Programs



Conservation Captains



Outdoor Water Discovery Camp

New Youth Education Partnerships

Partnered with:

- City Nature Centers for School Field Trips
- Blue Zones for Teacher Workshop
- FW Parks & Recreation, FWISD, Blue Zones & Kaboom for a Playground Renovation
- DPR Construction for an Outdoor Garden at a Child Dev. Center



Customer City Support

WATER SUPPLY · FLOOD PROTECTION · RECREATION



Conservation Community Outreach

WATER SUPPLY · FLOOD PROTECTION · RECREATION



Conservation Treasures Grantee

Lake Arlington Native Plant & Pollinator Garden

- 2,000 sq. ft. of native plant landscaping
- 2.75 acres of wildflower meadow seeded
- Public classes & events each month



Conservation Treasures Grantee

Child Care Associates: Fuller Child Dev. Center

- Native landscaping
- Educational mural
- Rain barrels
- Mulched area for raised beds



Conservation Treasures Grantee

Child Care Associates:
Park Lake Child Dev. Center

- Planter boxes & benches
- Native & adapted plants
- Rain barrel
- Educational features



Conservation Treasures Grantee

Liberty Elementary School, Keller ISD

- 750+ sq. ft. of native flower beds
- Planted by 360 students & 18 teachers
- Prepped by 50 family volunteers





2022 Conservation Recognition

- Texas Watermark Award for Communication Excellence
 - “Water is Awesome” Campaign
- Texas Water Conservation and Reuse Award
 - Painted Rain Barrel Educational Displays
- EPA WaterSense Excellence in Education and Outreach Award
 - Promotion of WaterSense products and behaviors through classes, events and communications.



Staff Update

MWBE Vendor Participation Update

Crystal Alba, Diverse Business Specialist

Cumulative through Quarter 4 - FY 2022

	Total Actuals	Diverse Business Actuals	Diverse Business %
Tarrant Regional Water District *(w/o IPL and Central City Project)	\$145,326,327	\$26,601,813	18%
**Central City Project	\$58,955,564	\$19,923,639	34%
***Integrated IPL (IPL)	\$851,494,848	\$276,114,575	32%
TRWD Grand Total	\$1,055,776,739	\$322,640,027	31%

*TRWD General Fund, Revenue Fund and Construction Funds reporting dates are 10/1/2013 – 9/30/2022.

**Central City Project reporting dates are 7/1/2006-9/30/2022.

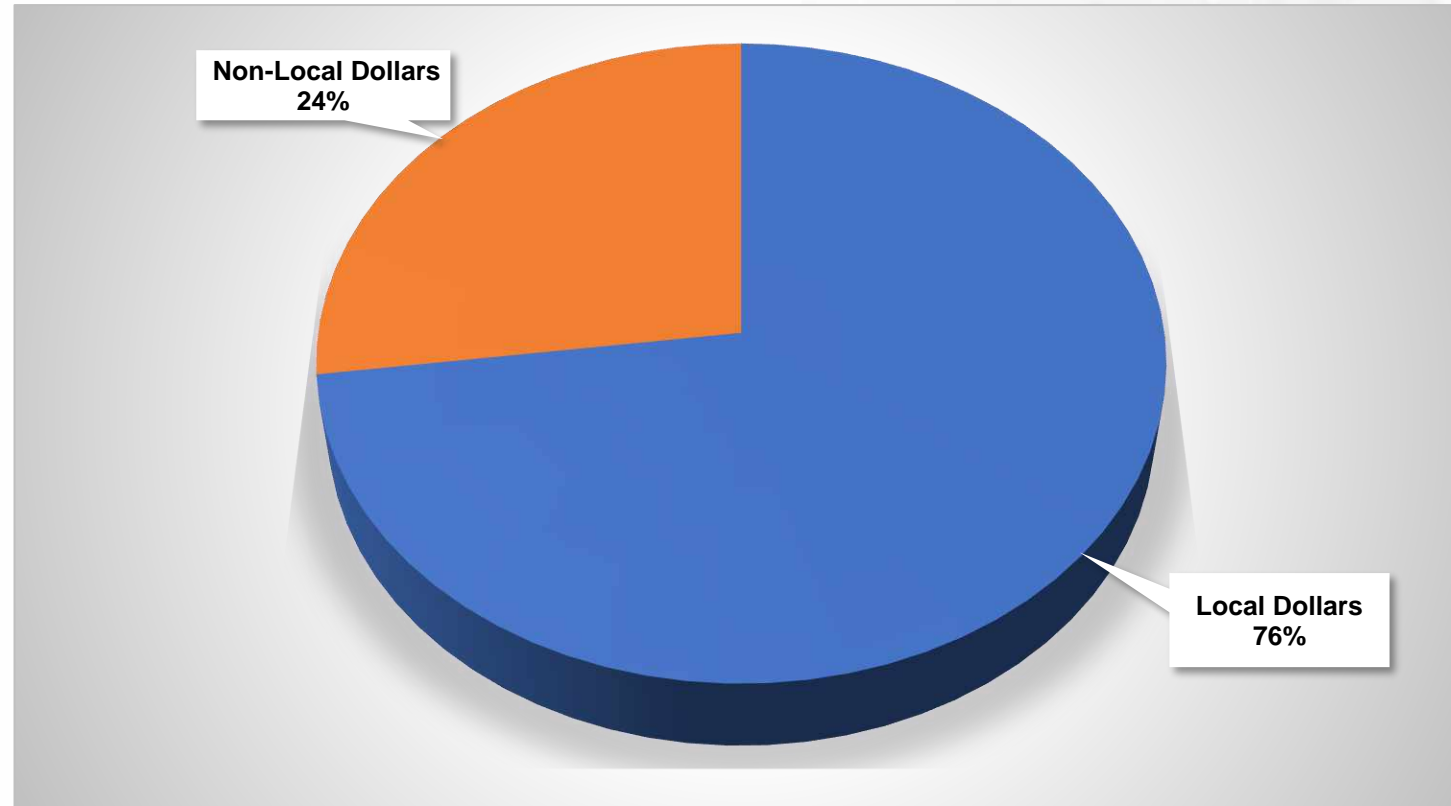
***TRWD IPL Reporting dates are 1/1/2009 – 9/30/2022. Figures do not include pipe, owner furnished equipment or land.

Fiscal Year 2022

	Total Actuals	Diverse Business Actuals	Diverse Business %
Tarrant Regional Water District (w/o IPL and Central City Project)	\$9,501,636	\$3,725,311	39%
Central City Project	\$3,303,888	\$666,194	20%
Integrated IPL (IPL)	\$57,297,736	\$12,881,110	22%
TRWD Grand Total	\$70,103,260	\$17,272,615	25%

* Reporting dates include 10/1/2021-9/30/2022. Figures do not include pipe, owner furnished equipment or land.

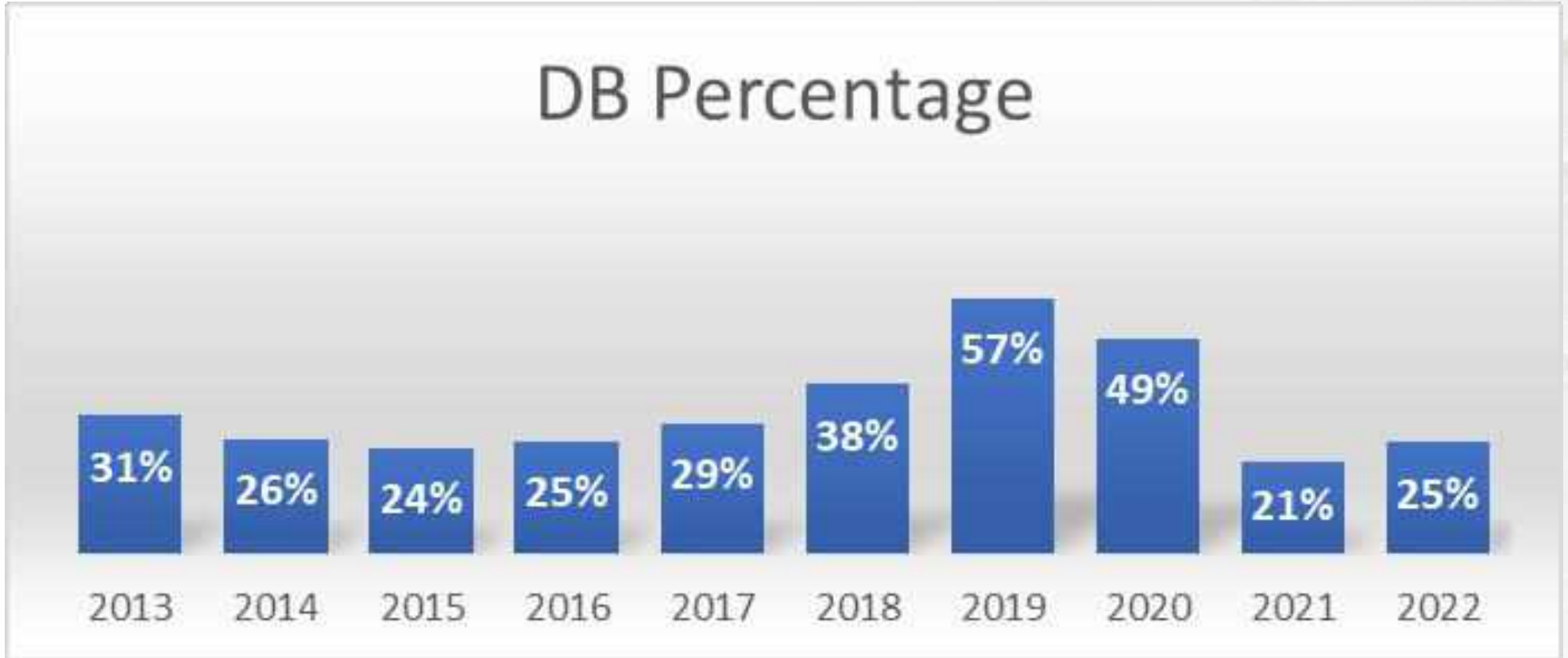
Local Dollars



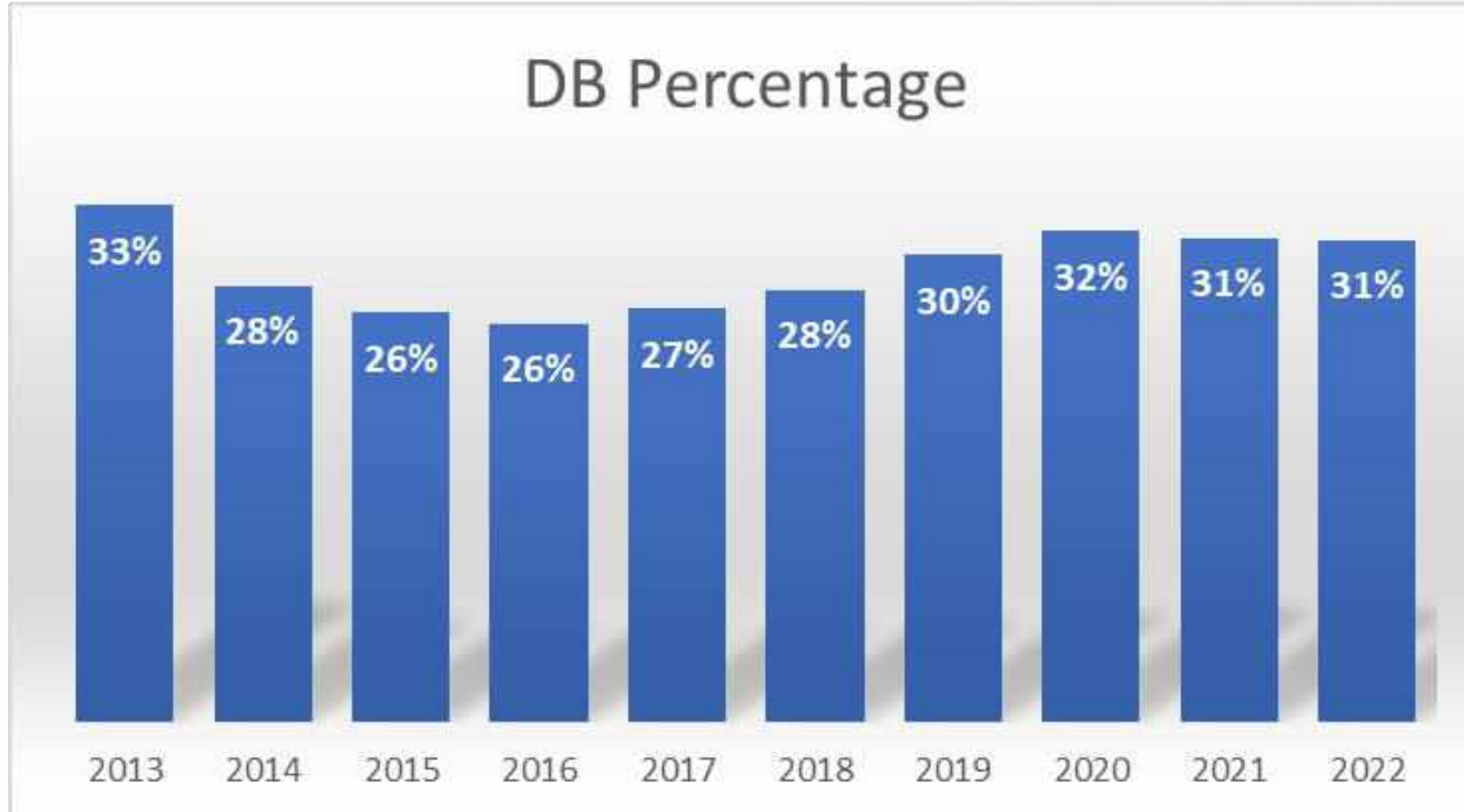
**Reporting dates are 1/1/2009-9/30/2022*

***Local includes Tarrant, Dallas, Anderson, Collin, Denton, Ellis, Freestone, Henderson, Jack, Johnson, Kaufman, Navarro, Parker, Rockwall, or Wise counties.*

Diverse Business Actuals Percentage by Year



Diverse Business Actuals Percentage by Year - Cumulative

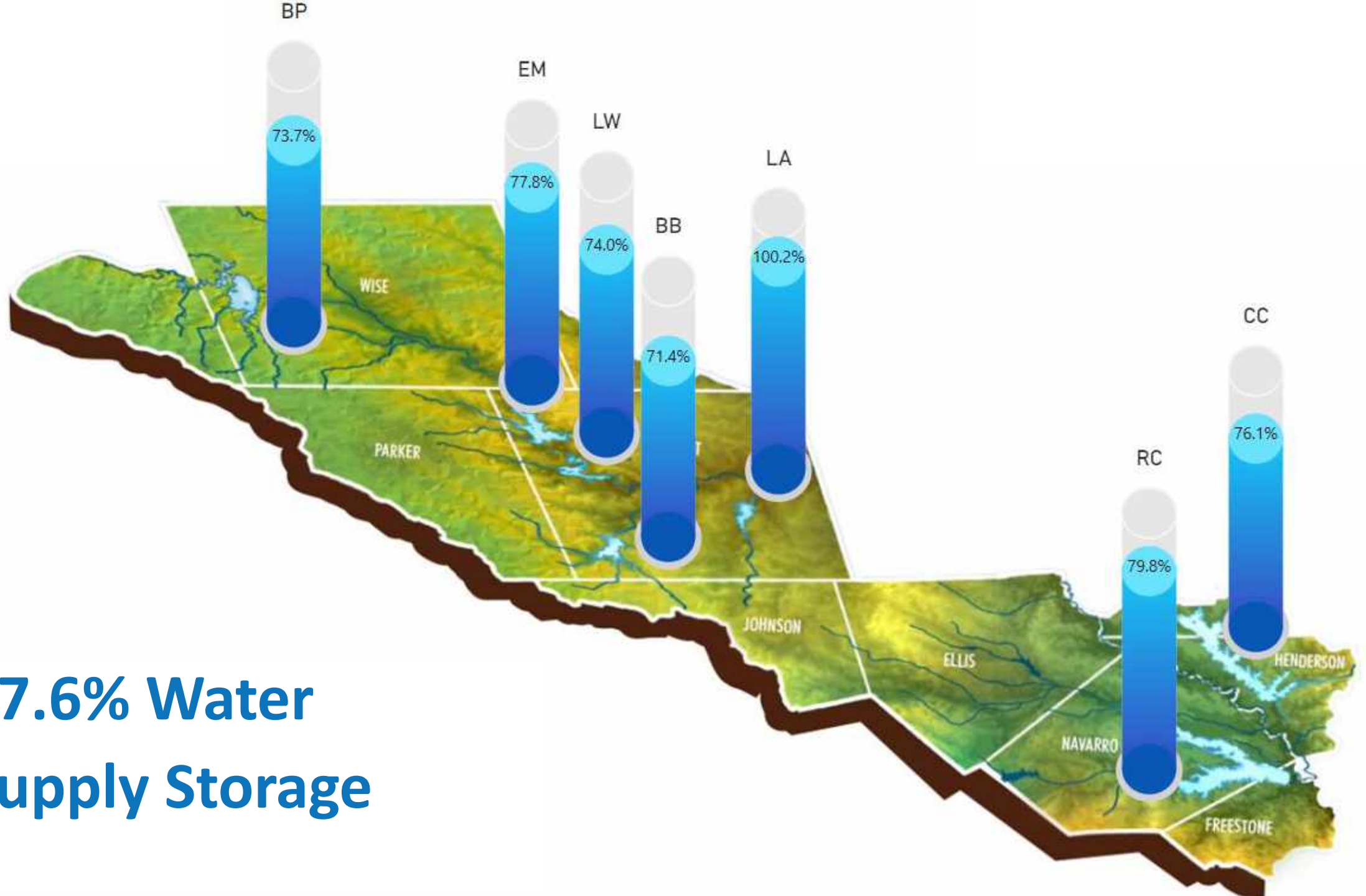


Staff Update

Water Resources Update

Rachel Ickert, *Chief Water Resources Officer*

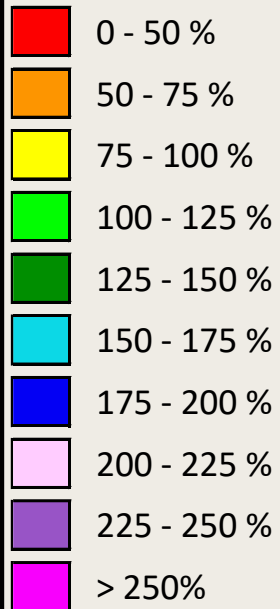
77.6% Water Supply Storage



Percent of Normal Rainfall

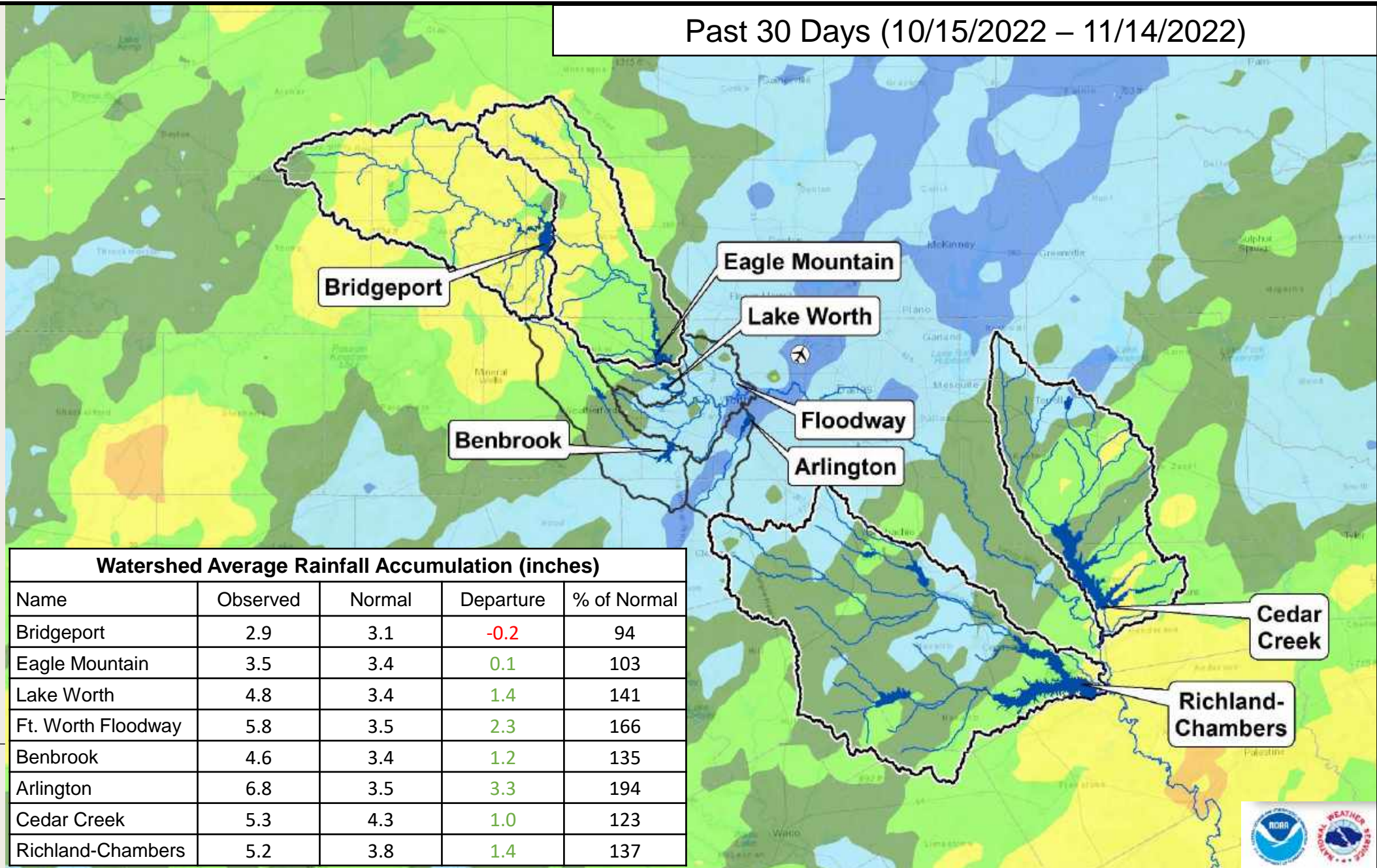


LEGEND



Precipitation totals are obtained from NOAA's NWS. The totals displayed are estimated by the WGRFC. The data is processed and displayed using ESRI ArcGIS.

Past 30 Days (10/15/2022 – 11/14/2022)



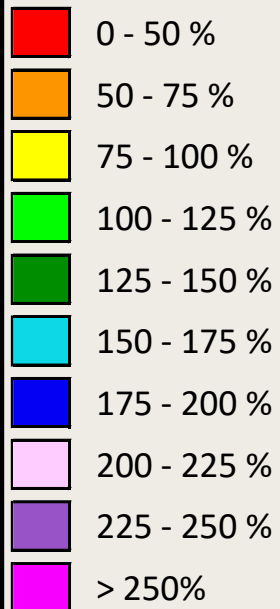
Watershed Average Rainfall Accumulation (inches)				
Name	Observed	Normal	Departure	% of Normal
Bridgeport	2.9	3.1	-0.2	94
Eagle Mountain	3.5	3.4	0.1	103
Lake Worth	4.8	3.4	1.4	141
Ft. Worth Floodway	5.8	3.5	2.3	166
Benbrook	4.6	3.4	1.2	135
Arlington	6.8	3.5	3.3	194
Cedar Creek	5.3	4.3	1.0	123
Richland-Chambers	5.2	3.8	1.4	137



Percent of Normal Rainfall

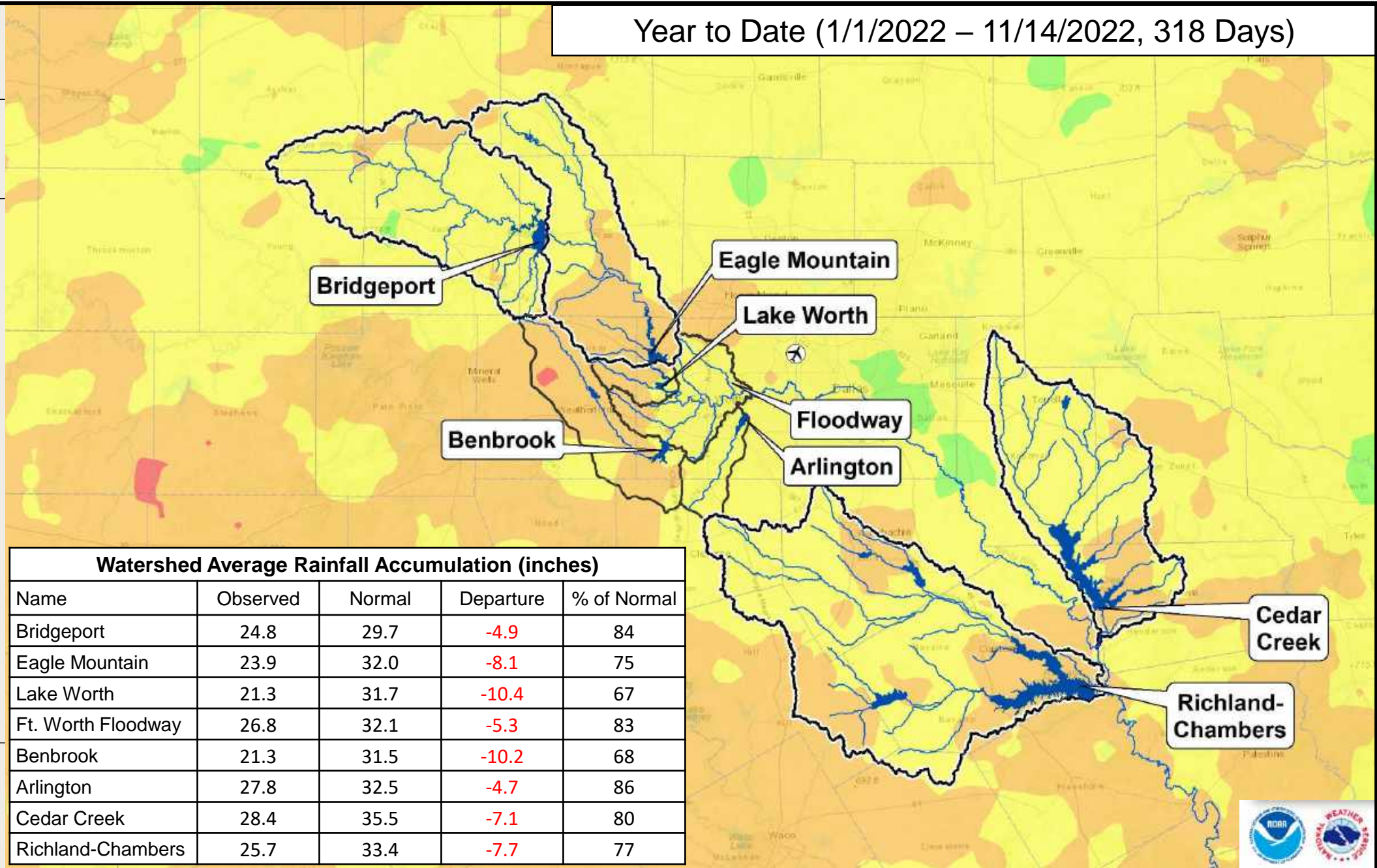


LEGEND



Precipitation totals are obtained from NOAA's NWS. The totals displayed are estimated by the WGRFC. The data is processed and displayed using ESRI ArcGIS.

Year to Date (1/1/2022 – 11/14/2022, 318 Days)

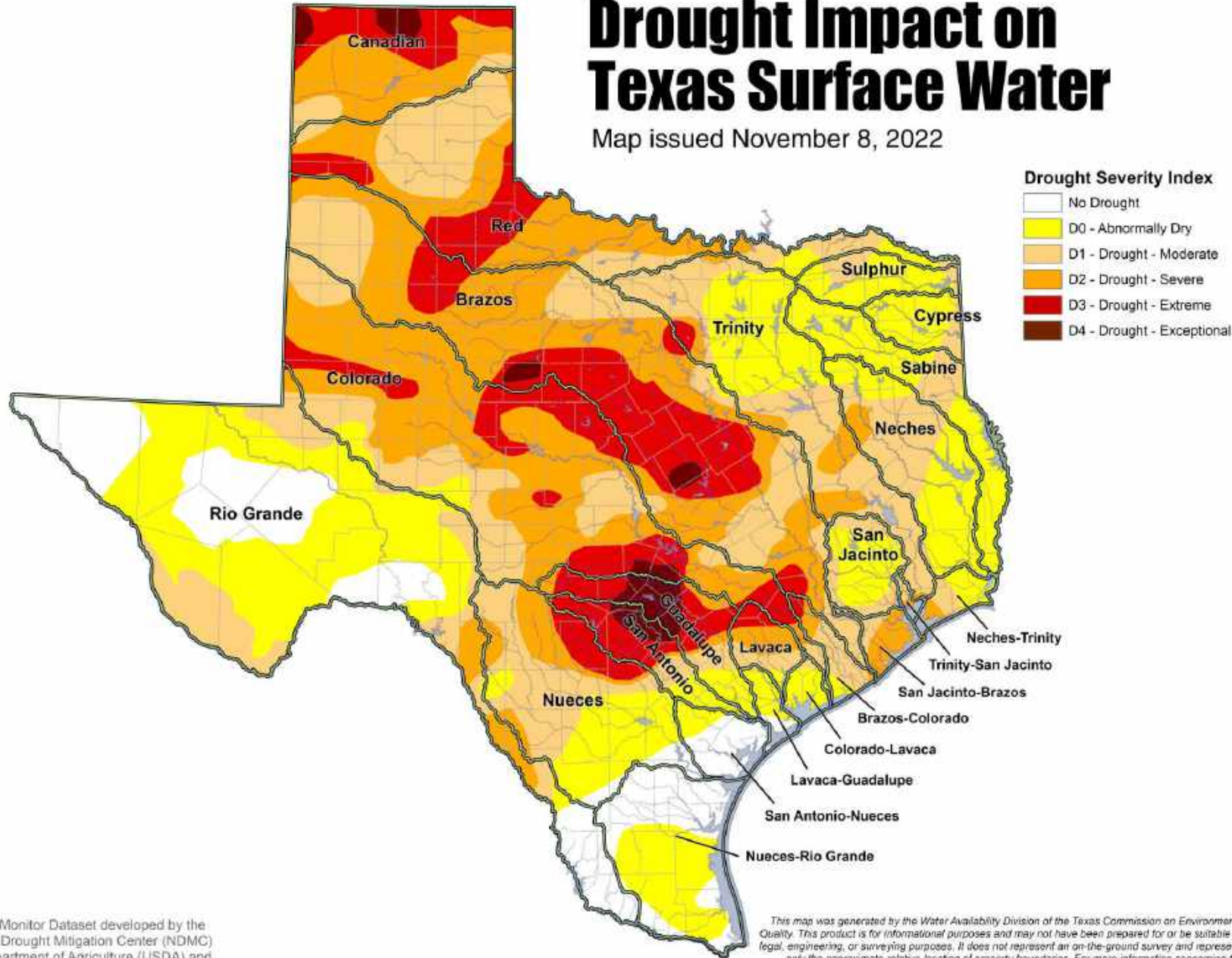


Watershed Average Rainfall Accumulation (inches)				
Name	Observed	Normal	Departure	% of Normal
Bridgeport	24.8	29.7	-4.9	84
Eagle Mountain	23.9	32.0	-8.1	75
Lake Worth	21.3	31.7	-10.4	67
Ft. Worth Floodway	26.8	32.1	-5.3	83
Benbrook	21.3	31.5	-10.2	68
Arlington	27.8	32.5	-4.7	86
Cedar Creek	28.4	35.5	-7.1	80
Richland-Chambers	25.7	33.4	-7.7	77



Drought Impact on Texas Surface Water

Map issued November 8, 2022



November 8, 2022
(Released Thursday, Nov. 10, 2022)

Valid 7 a.m. EST

Drought Conditions (Percent Area)

	None	D0-D4	D1-D4	D2-D4	D3-D4	D4
Current	9.80	90.20	64.84	40.18	14.86	1.73
Last Week 11-01-2022	8.10	91.90	69.56	40.13	13.43	1.73
3 Months Ago 08-09-2022	1.03	98.97	96.30	87.50	68.21	29.09
Start of Calendar Year 01-04-2022	7.58	92.42	79.83	54.25	16.69	0.00
Start of Water Year 09-27-2022	14.96	85.04	61.36	31.61	8.82	1.06
One Year Ago 11-09-2021	38.58	61.42	32.22	5.62	0.00	0.00

Intensity:



The Drought Monitor focuses on broad-scale conditions. Local conditions may vary. For more information on the Drought Monitor, go to <https://droughtmonitor.unl.edu/About.aspx>

Author:

Brian Fuchs
National Drought Mitigation Center

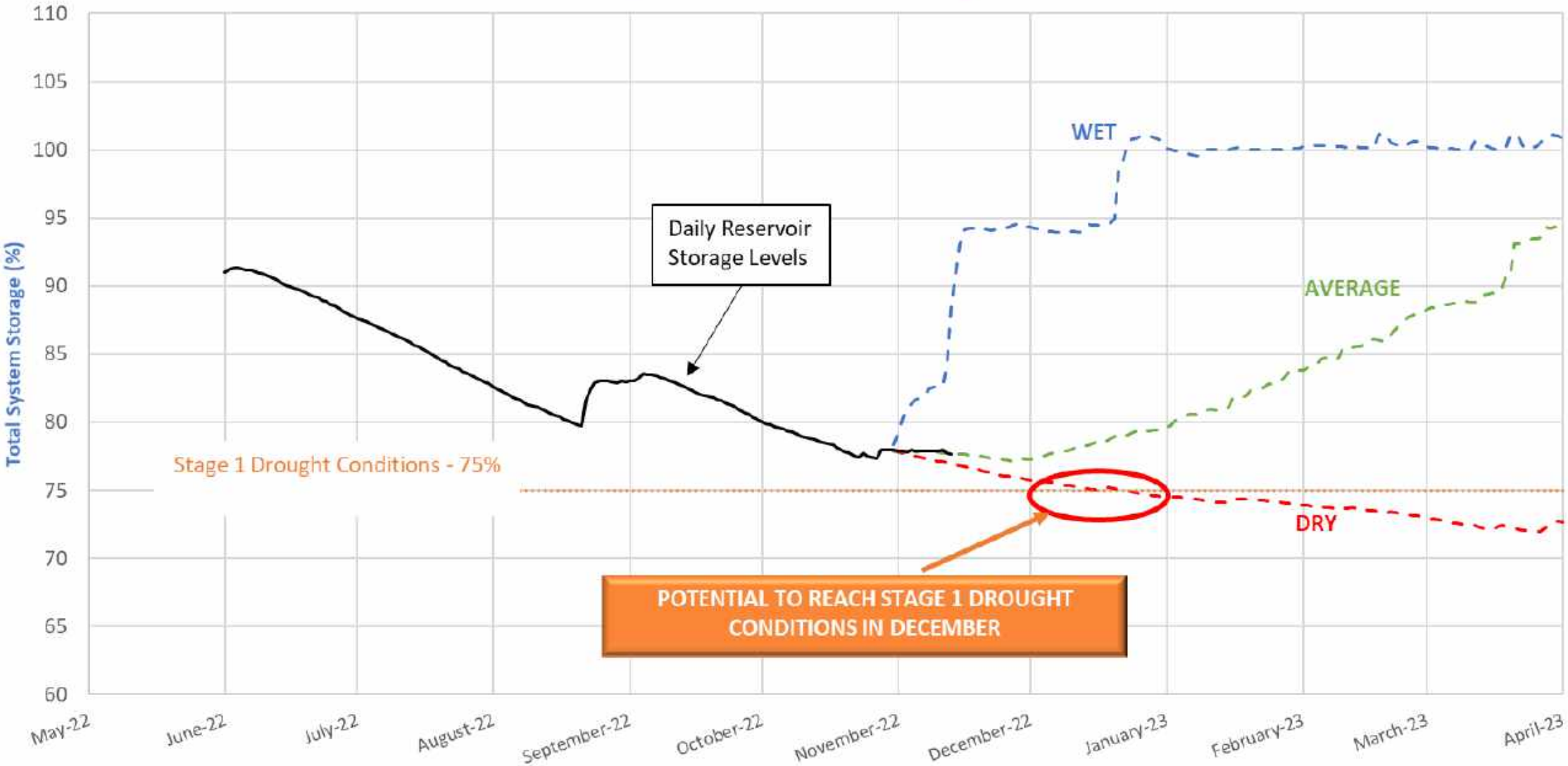
Drought Monitor Dataset developed by the National Drought Mitigation Center (NDMC), U.S. Department of Agriculture (USDA) and National Oceanic & Atmospheric Administration (NOAA)

This map was generated by the Water Availability Division of the Texas Commission on Environmental Quality. This product is for informational purposes and may not have been prepared for or be suitable for legal, engineering, or surveying purposes. It does not represent an on-the-ground survey and represents only the approximate relative location of property boundaries. For more information concerning this map, contact the Water Availability Division at (512)239-4600.



droughtmonitor.unl.edu

Projected Total System Storage





11

Future Agenda Items



12

Next Board Meeting
December 13, 2022 at 9:00 AM





13

Adjourn