

# BOARD OF DIRECTORS MEETING

---

December 14, 2021



## PLEDGE OF ALLEGIANCE

I pledge allegiance to the flag of the United States of America, and to the republic for which it stands, one nation under God, indivisible, with liberty and justice for all.



## PLEDGE OF ALLEGIANCE TO THE TEXAS FLAG

Honor the Texas flag; I pledge allegiance to thee, Texas, one state under God, one and indivisible.



# 2

## Public Comment





# 3

Consider Approval of the Minutes from the Meeting Held on November 16, 2021



# 4

Consider Approval of Contract with Plummer Associates, Inc. for Wetland Design and Environmental Permitting Services for the Cedar Creek Wetlands Project

Dan Buhman, *General Manager*

# THE CHALLENGE



OVER

**800,000**

PEOPLE DIED

last year from water-related diseases.



**2.1** BILLION  
PEOPLE

around the world don't have access  
to safe water.



**200** MILLION  
HOURS

are lost every day by women and girls  
to sourcing water.



**NEARLY**



**1 IN 3 PEOPLE**  
lack access to clean water.



**2,000,000,000**

**PEOPLE**

use a drinking source  
contaminated with human waste.



MORE THAN

**1 IN 2**  
**PEOPLE**

don't have a decent toilet.

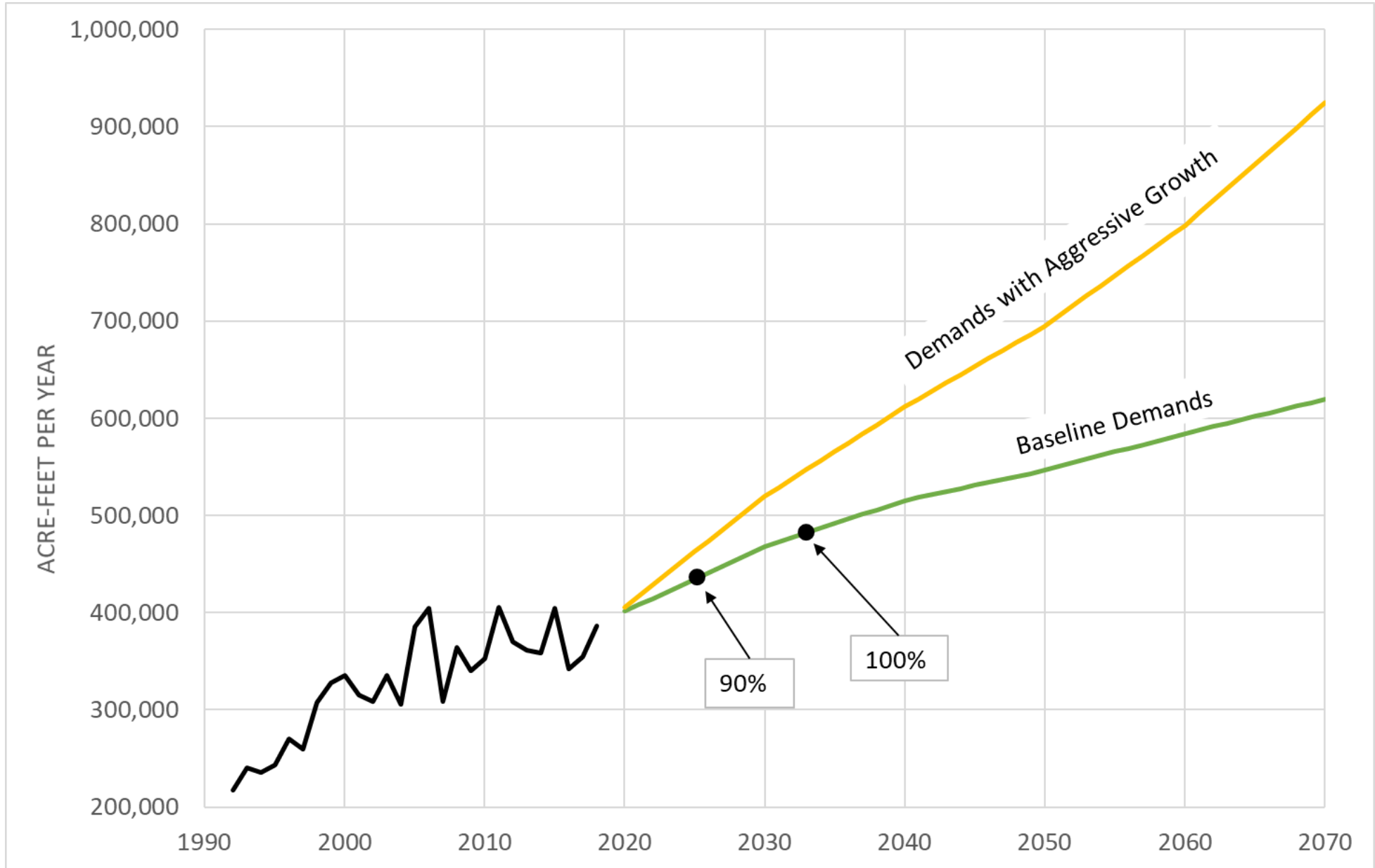


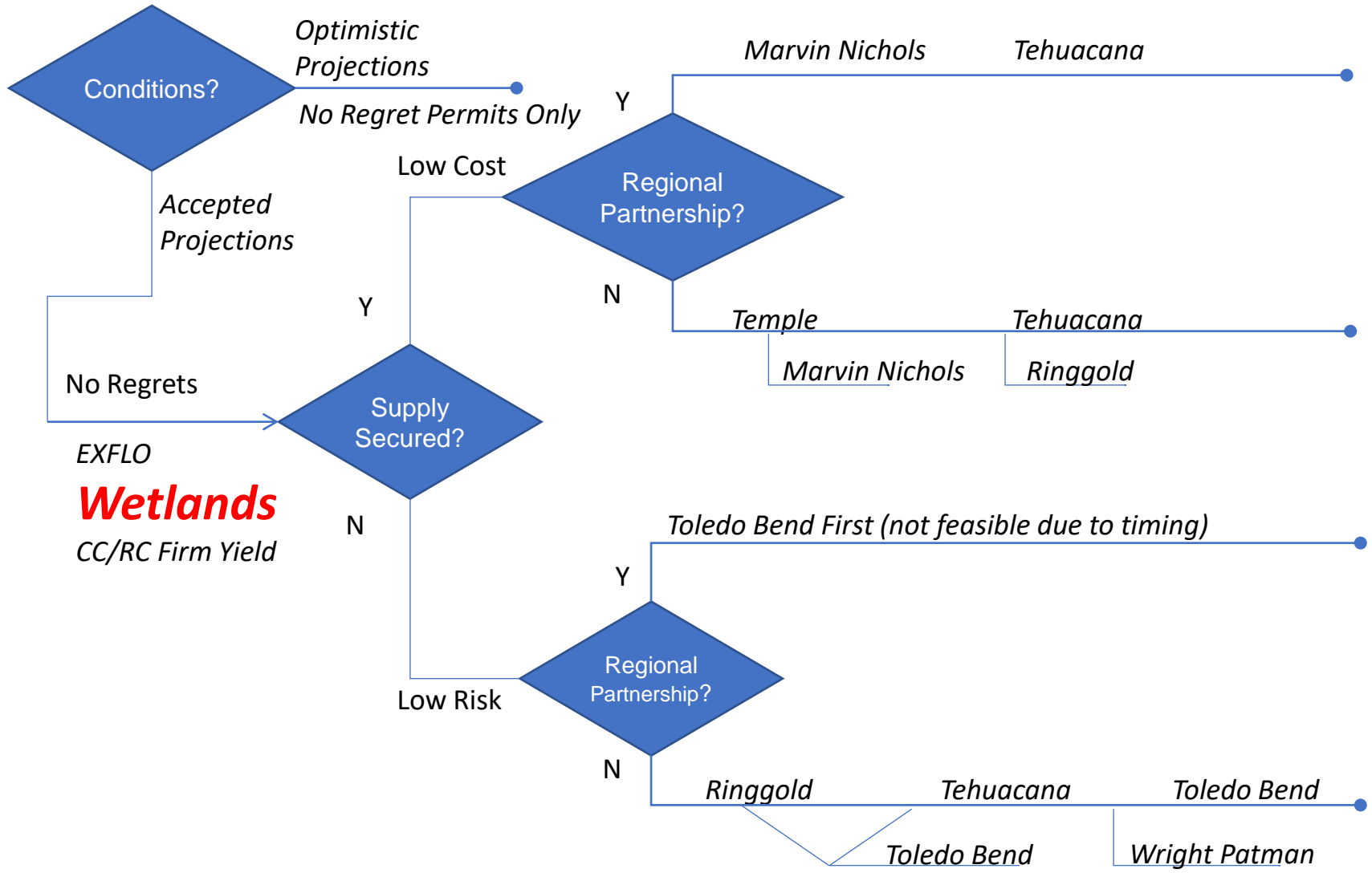
**3 IN 10 CHILDREN**

don't have clean water at school.



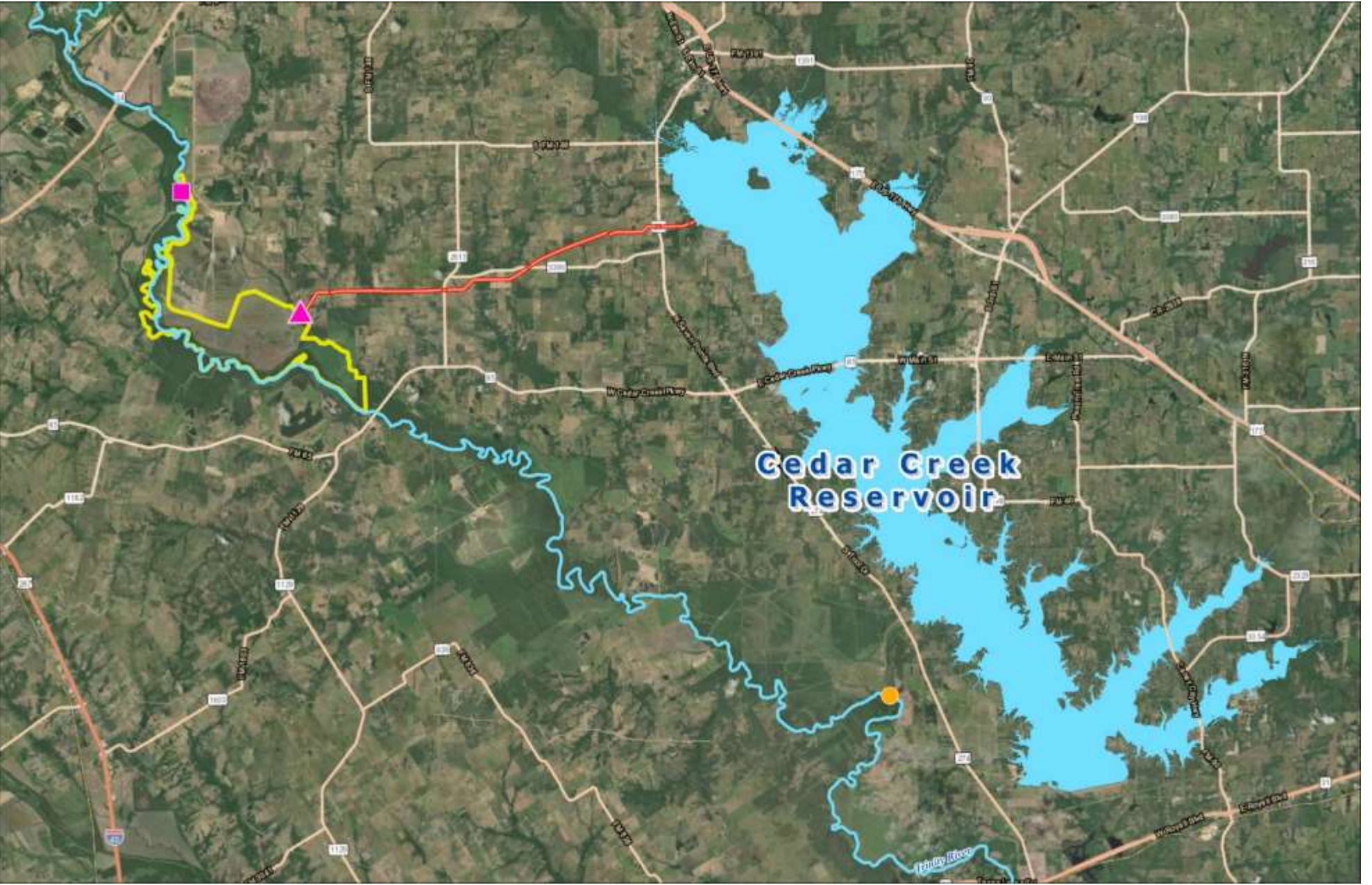


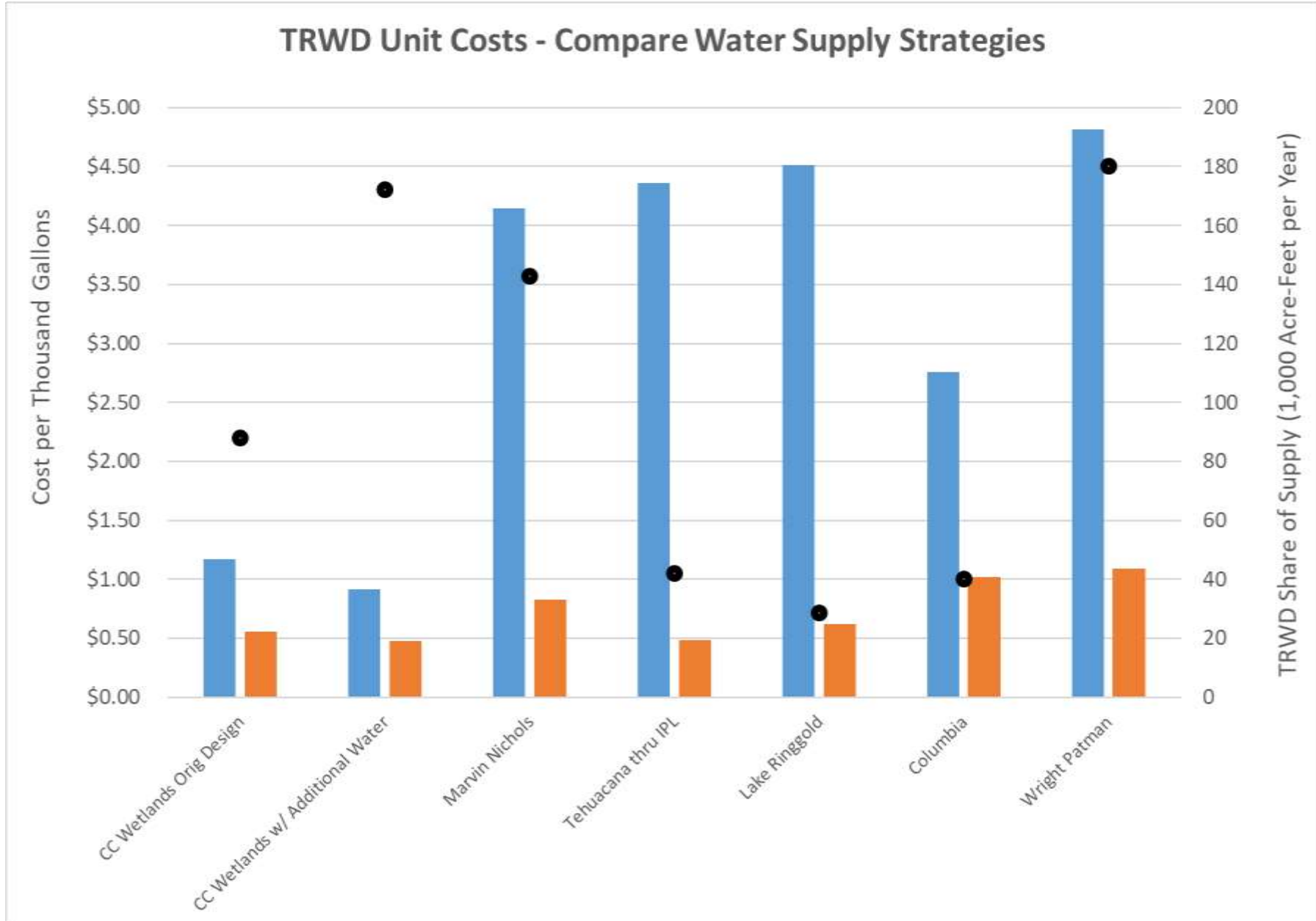


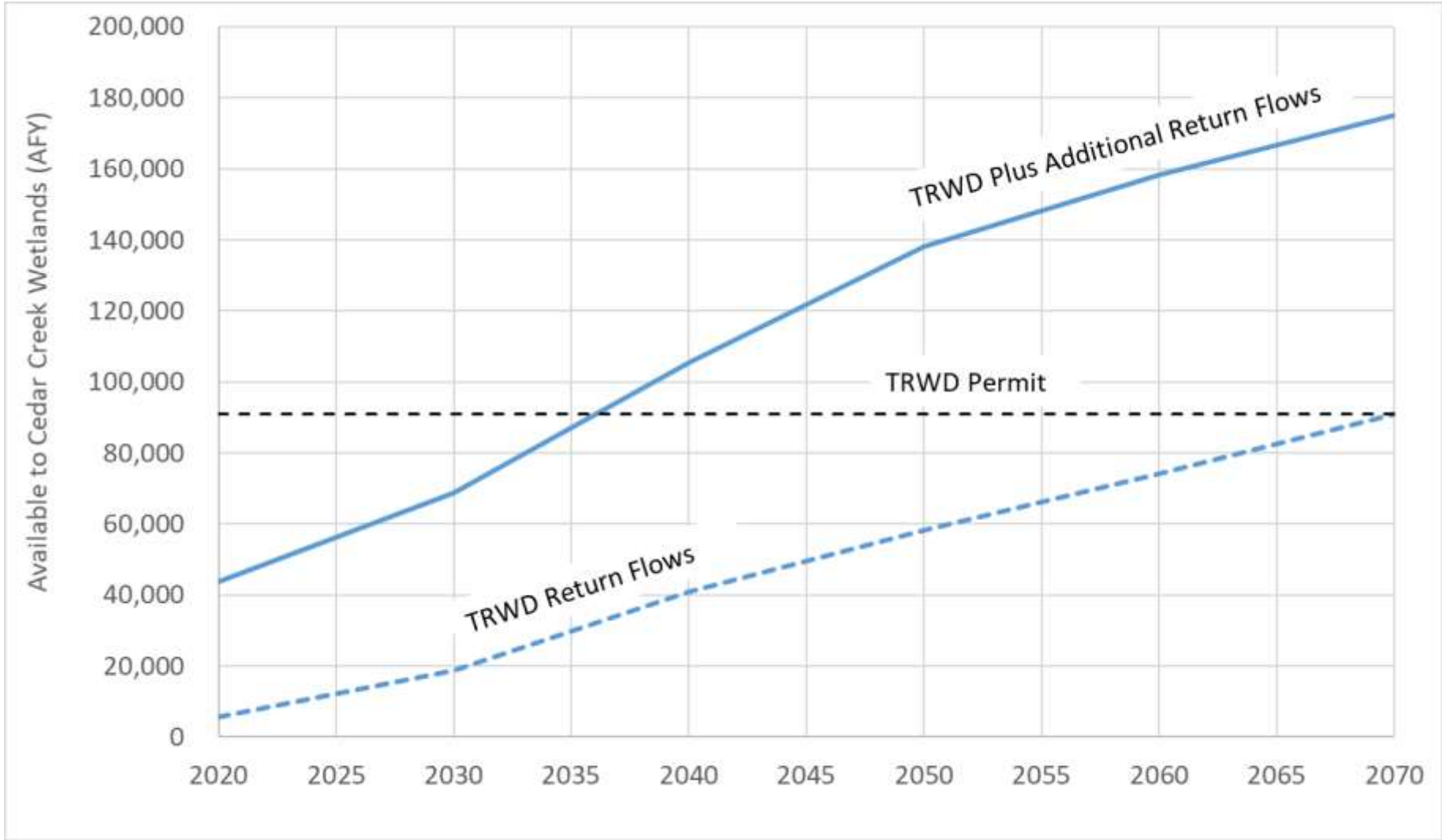


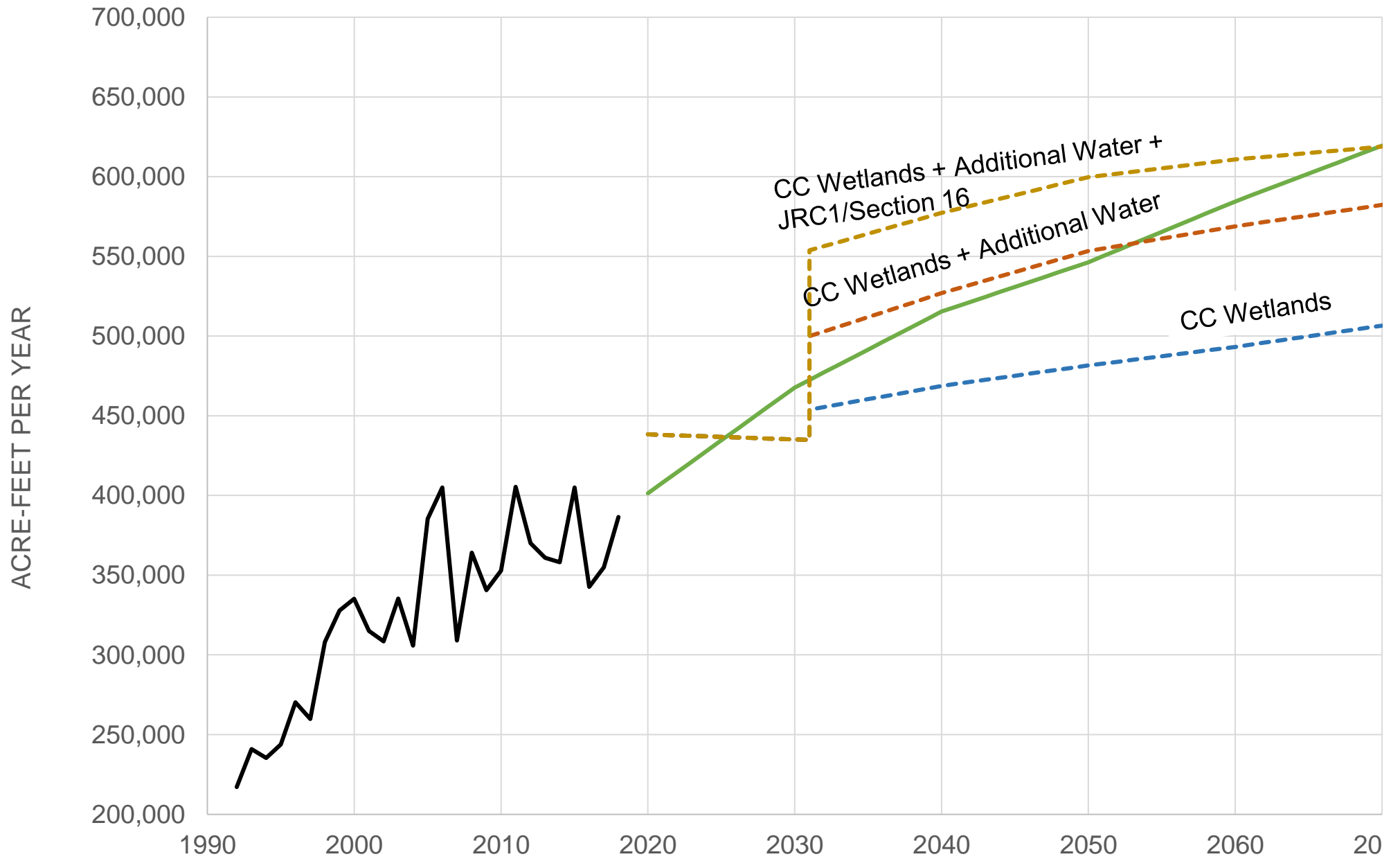
**Wetlands**  
CC/RC Firm Yield

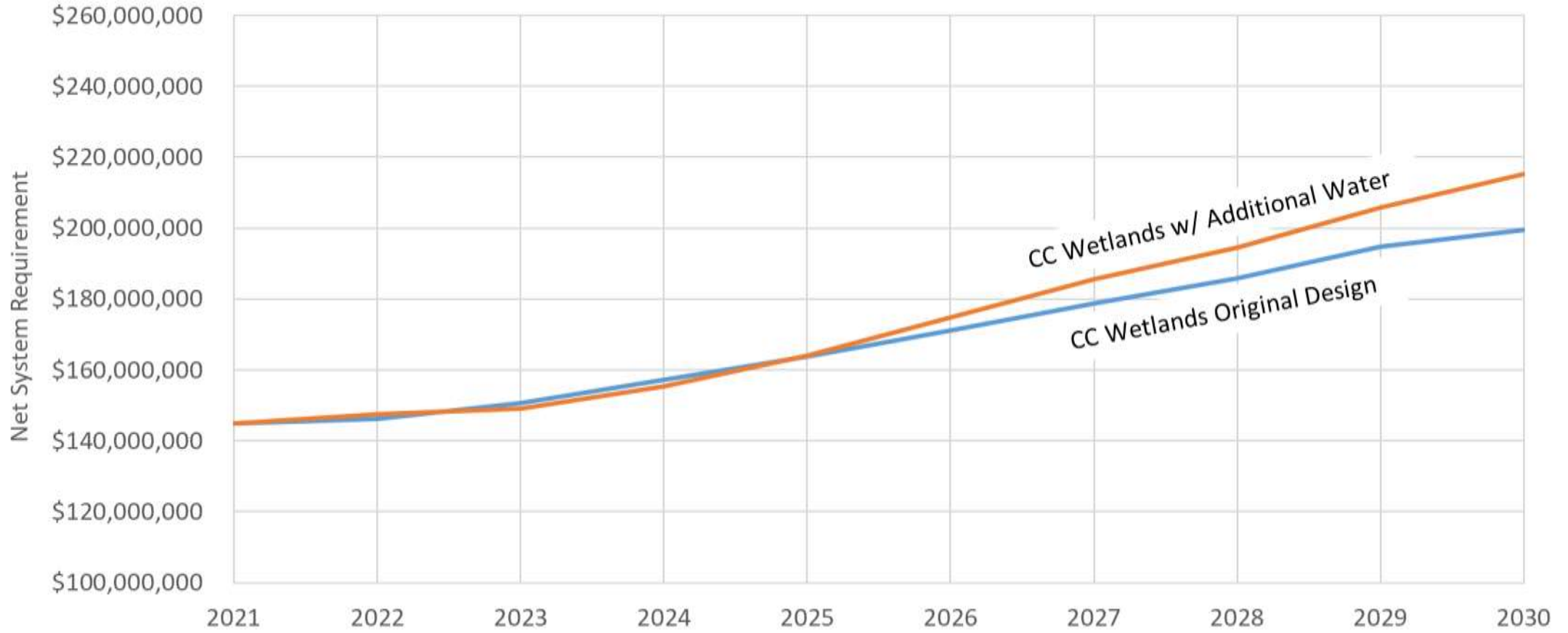




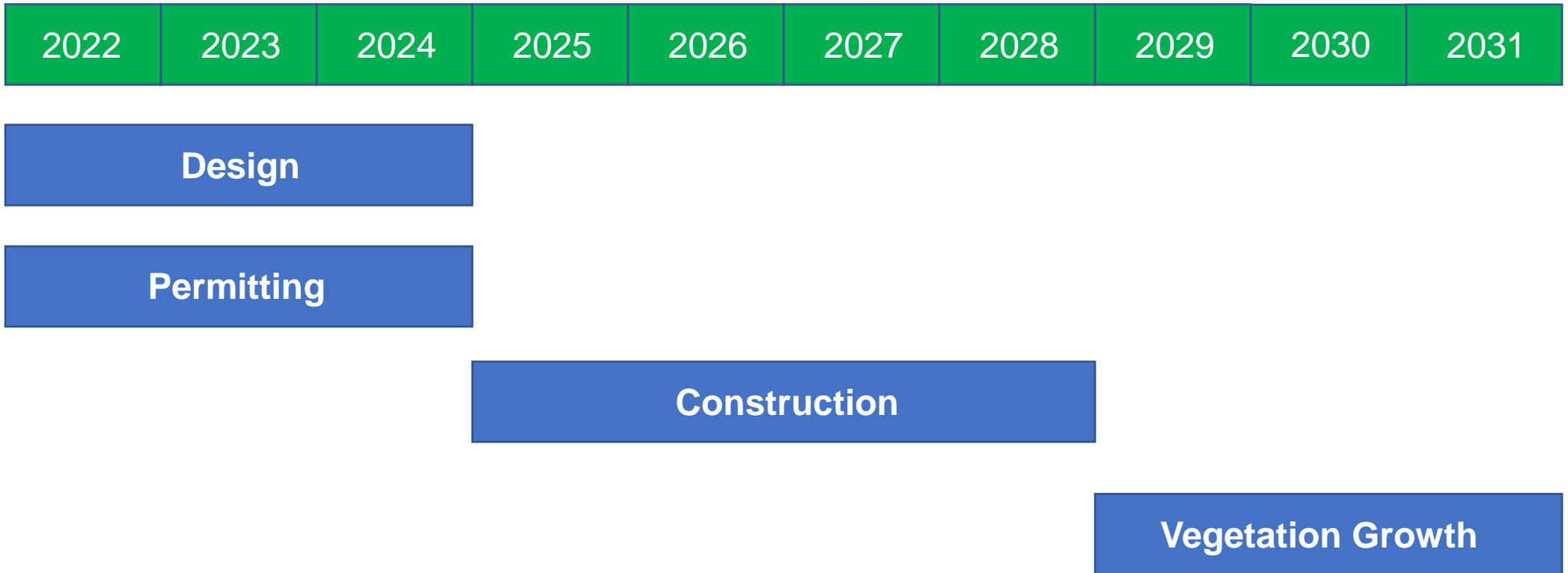








# Cedar Creek Wetlands Project Implementation Schedule



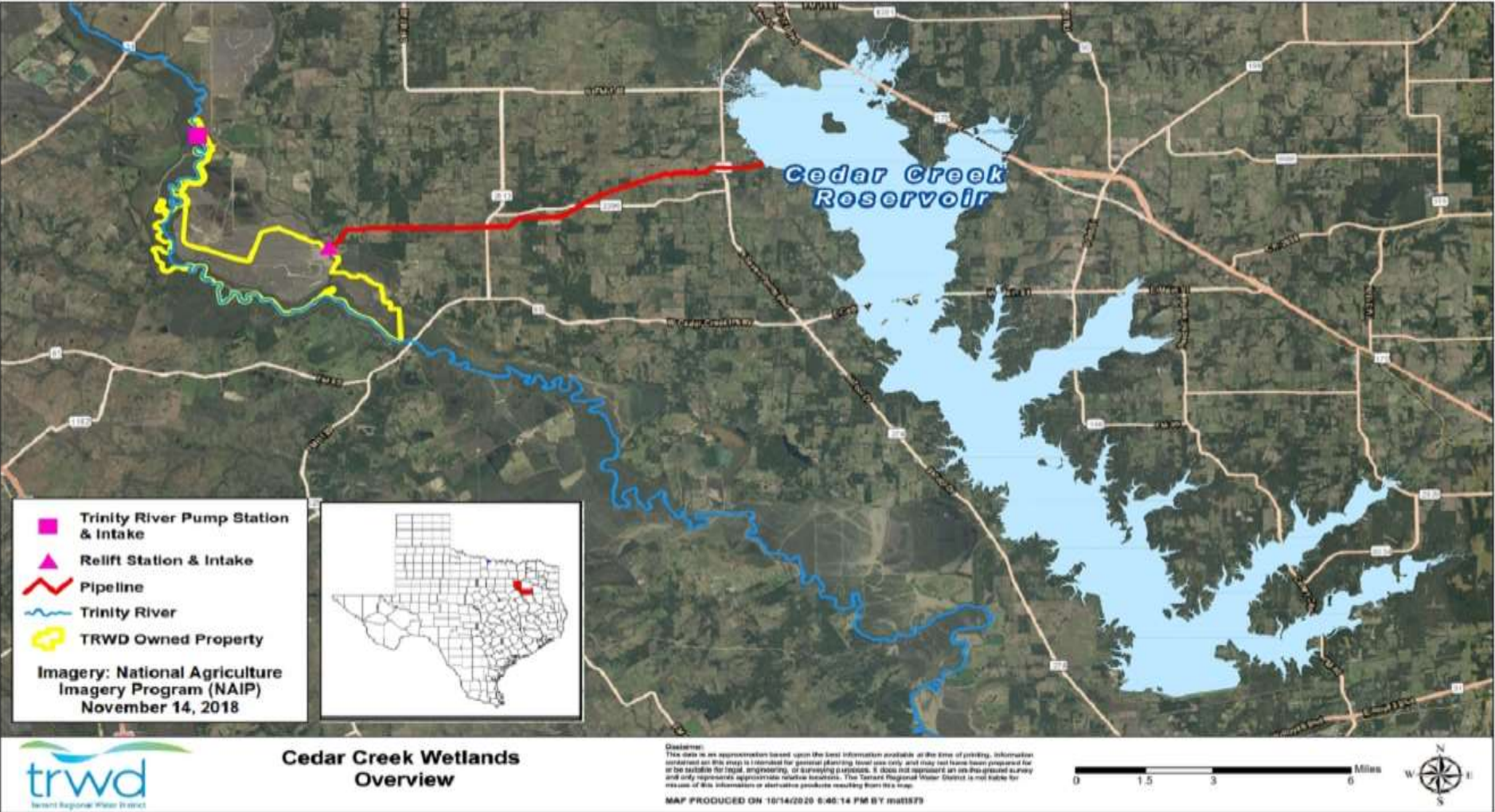


# Shannon Wetland System at Richland-Chambers



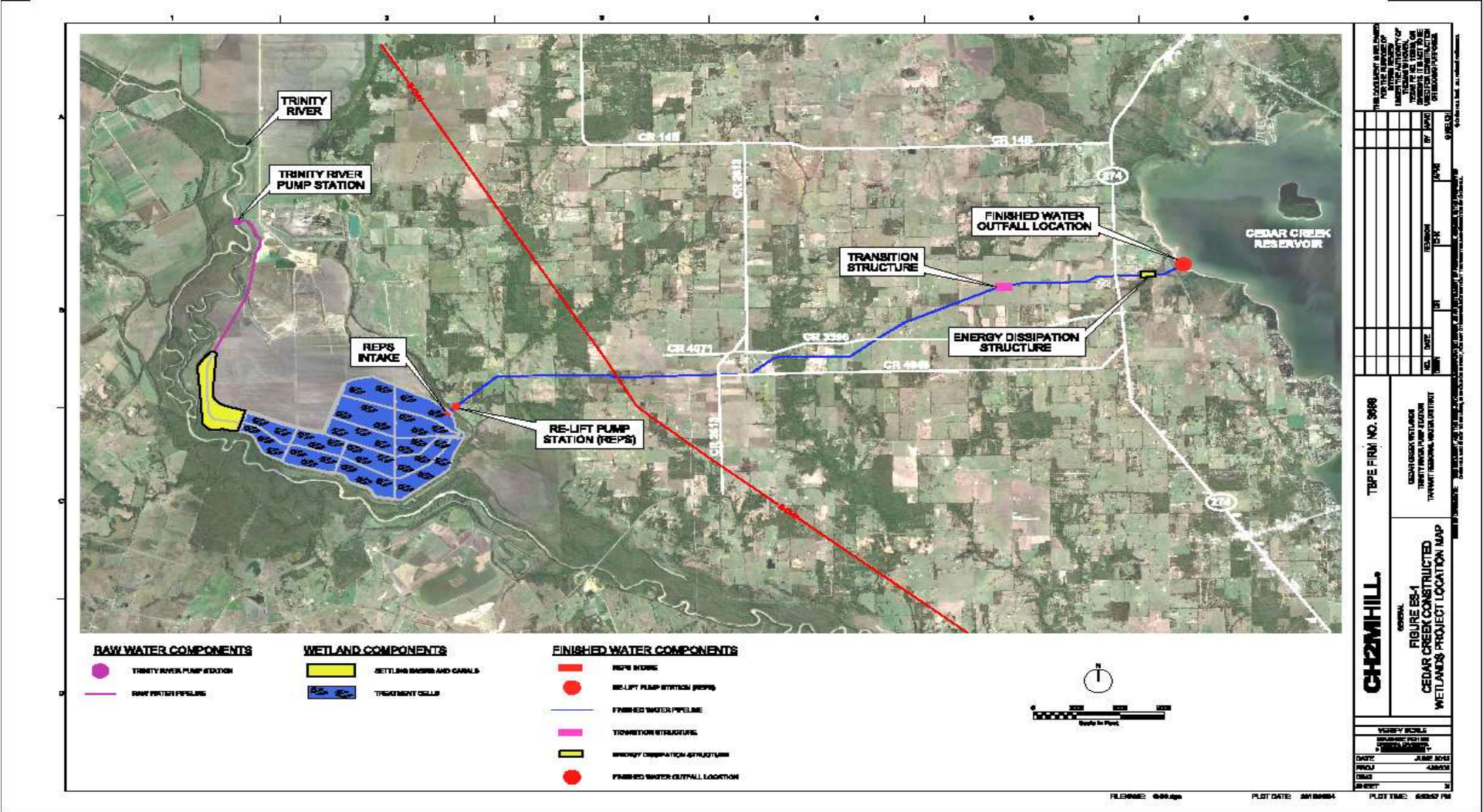
# Cedar Creek Wetland Property Location

WATER SUPPLY · FLOOD PROTECTION · RECREATION



# Cedar Creek Wetland Property Location

WATER SUPPLY · FLOOD PROTECTION · RECREATION

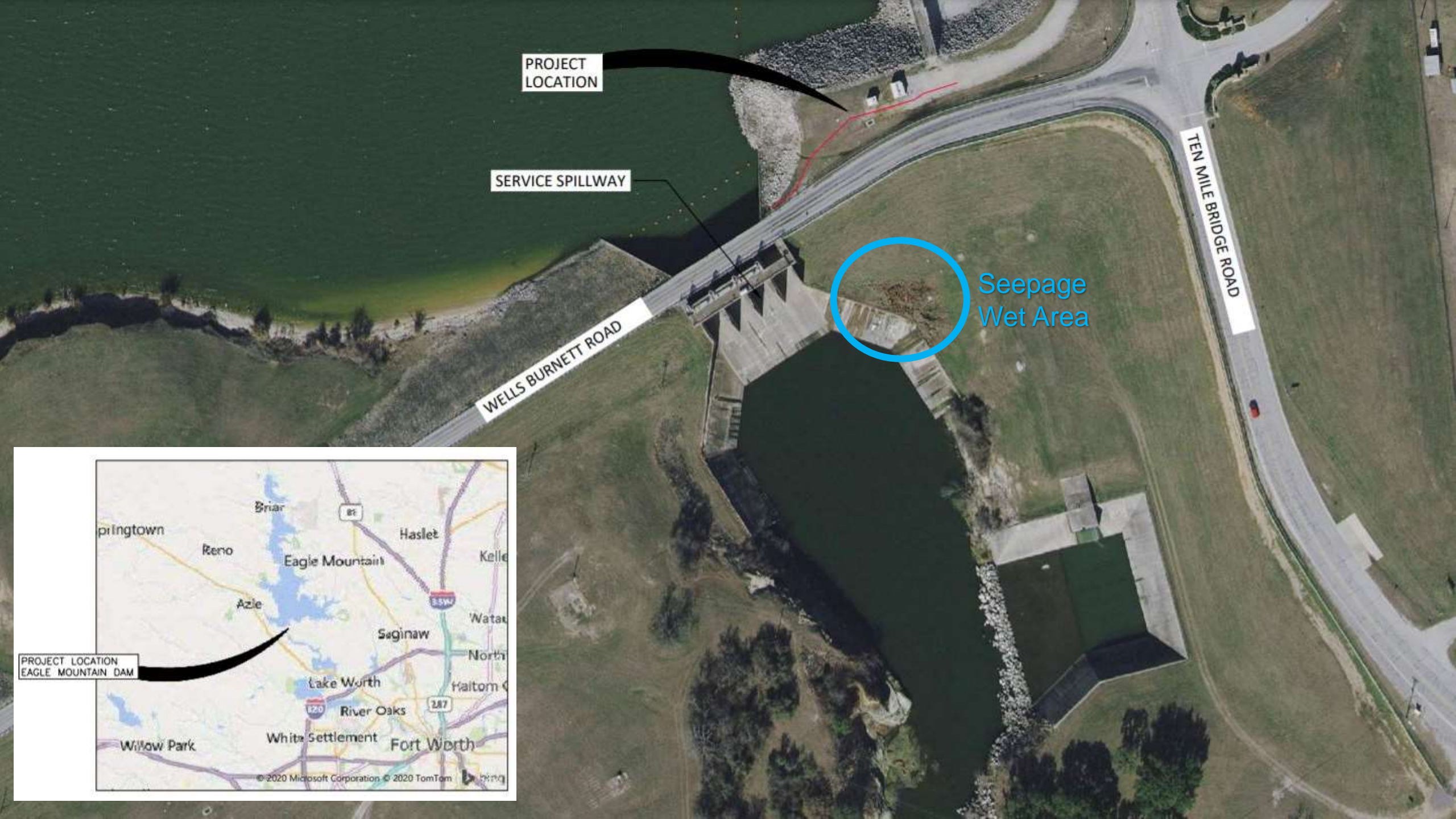




# 5

## Consider Approval of Contract with Bauer Foundation Corporation for Eagle Mountain Dam Side Channel Spillway Seepage Remediation

*Jason Gehrig, Infrastructure Engineering Director*



PROJECT LOCATION

SERVICE SPILLWAY

WELLS BURNETT ROAD

TEN MILE BRIDGE ROAD

Seepage Wet Area




PROJECT LOCATION  
EAGLE MOUNTAIN DAM

# EM Spillway Site Overview

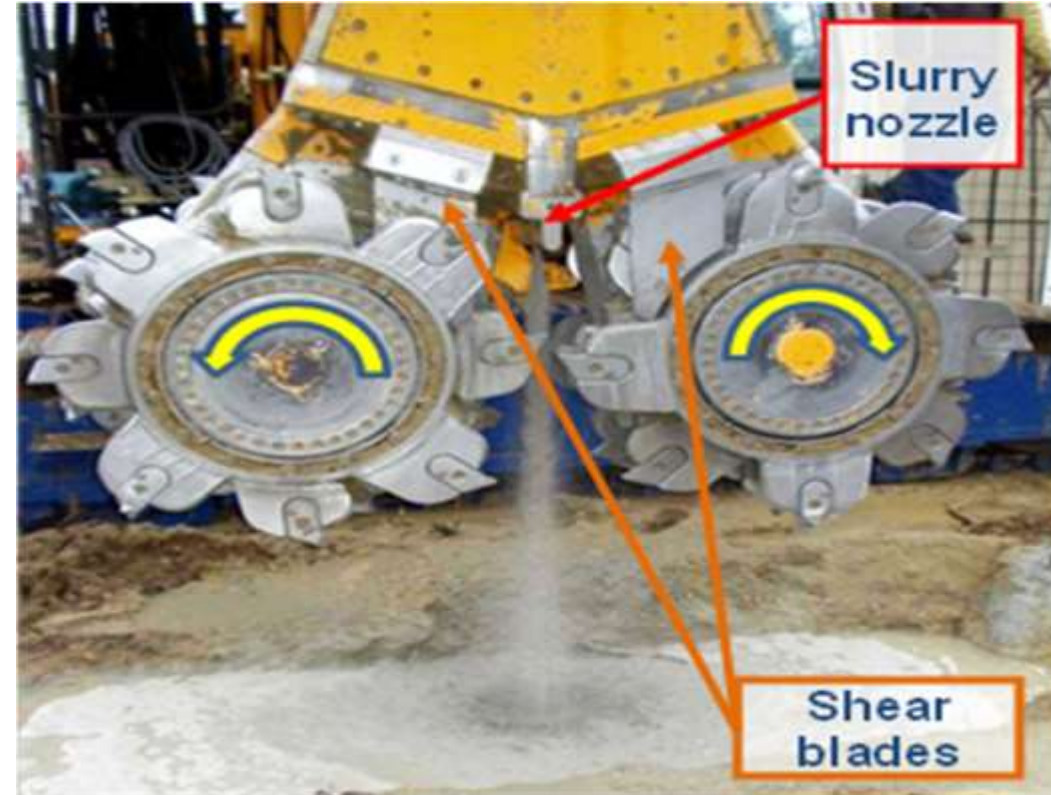
1. Bauer mixing plant and offices.
2. Side channel spillway conduit (buried).
3. Cutter Soil Mix cutoff wall alignment.
4. Approach to original spillway and end of Cutter Soil Mix wall.

4 Eagle Mountain Dam



# Tools Used for Cutter Soil Mixing

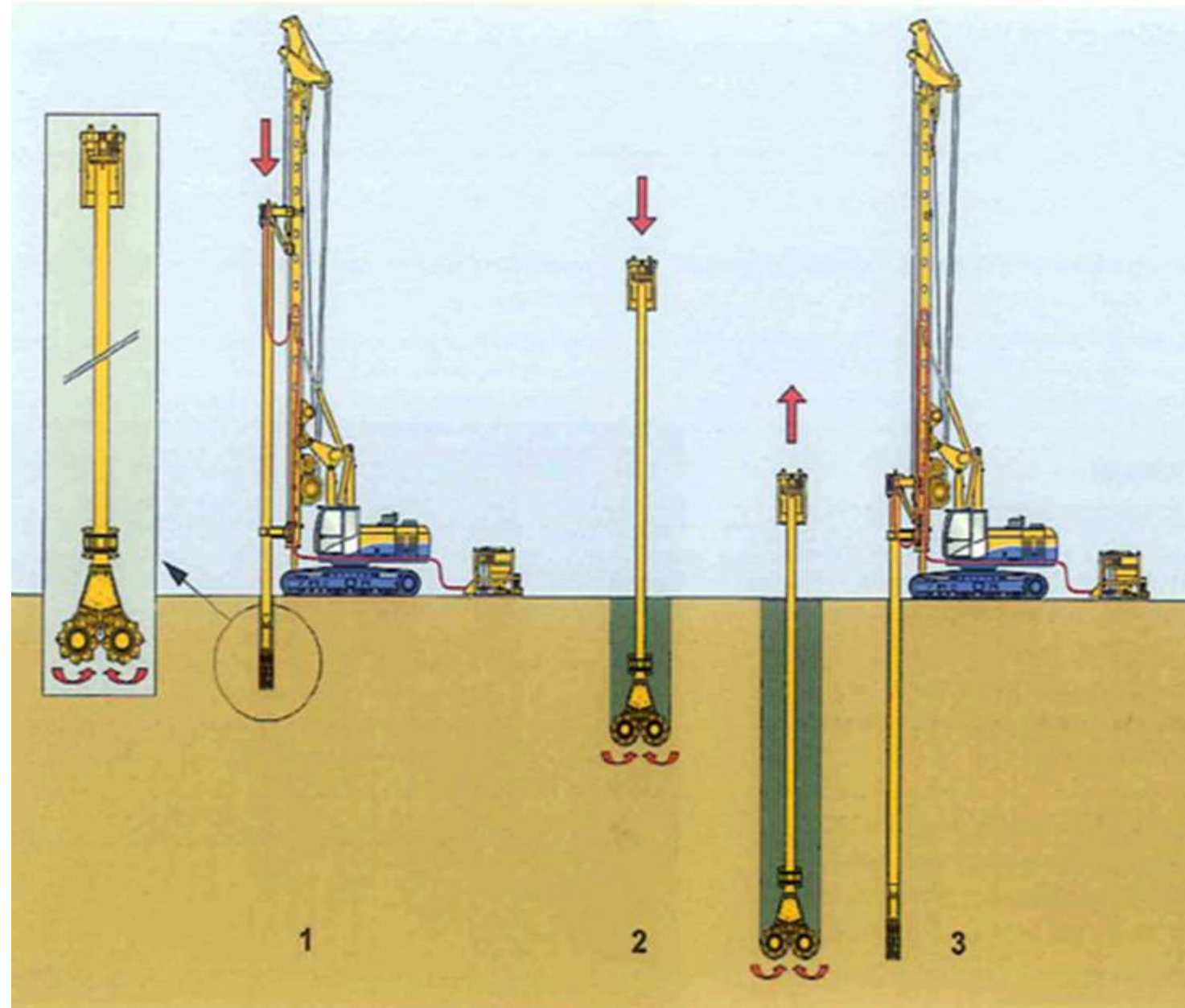
- Track-mounted rig
- Rotating cutting head in alignment trench
- Closeup of rotating cutting head





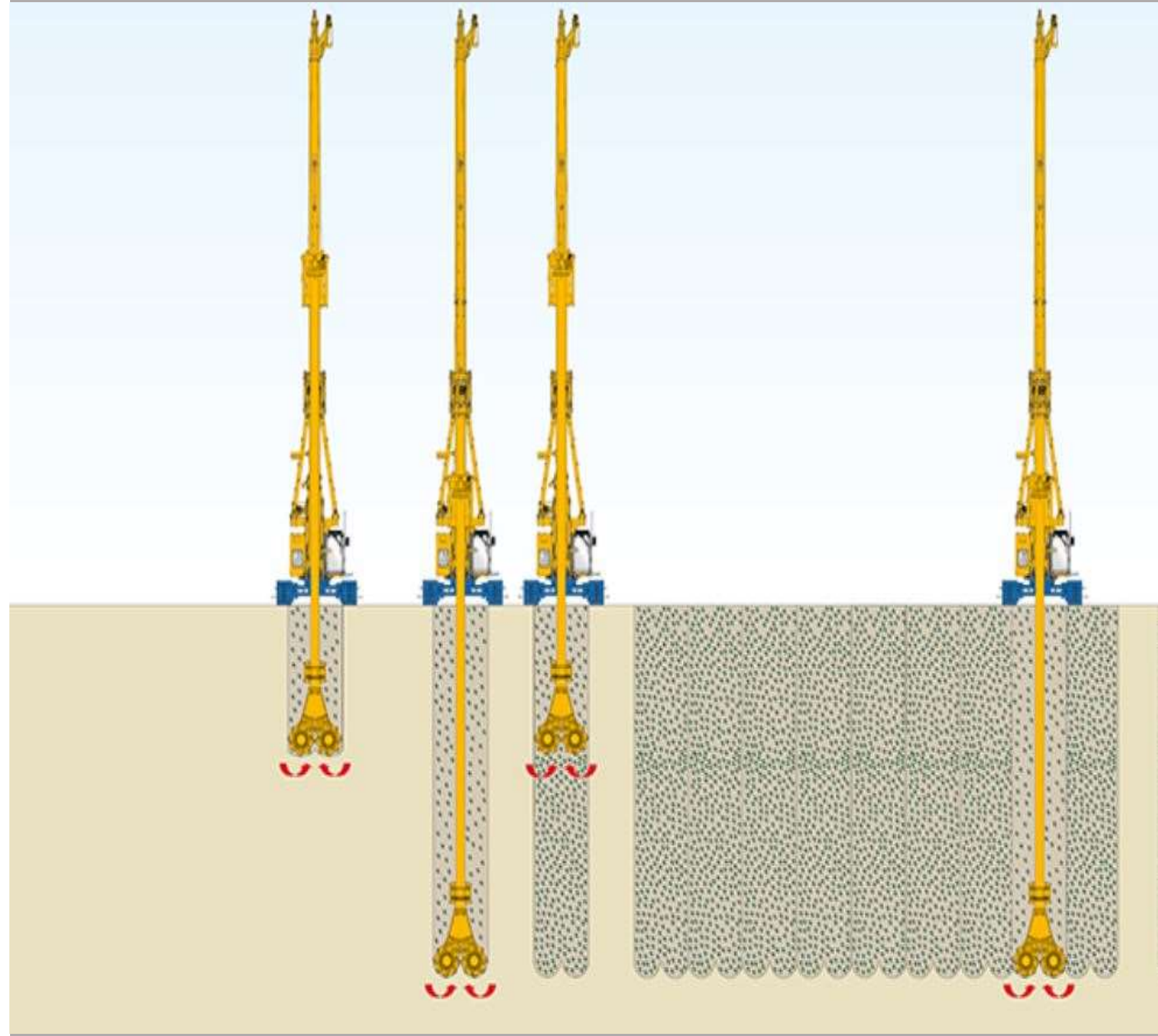
# General Overview of Cutter Soil Mixing Panel Installation

1. Excavator advances panel,  
side view
2. Excavator advances panel,  
front view of tool
3. Excavator extracts tool,  
leaving a cement-mixed soil in  
place / side view of  
excavator and panel



# Constructing the Cutter Soil Mixed Panel Wall

- Panel slots being excavated, first two figures
- Panel slot being filled with cement-mixed soil while extracting tool
- Installing an overlapping panel between two previously constructed panels



# 6

## Consider Approval of Contract with Davis Crane Service for a 110 Ton Hydraulic Crawler Crane

Darrell Beason, *Chief Operations Officer*

# 110 Ton Hydraulic Crawler Crane

---



# Removing Damaged Segment

WATER SUPPLY · FLOOD PROTECTION · RECREATION



# Installing New Segment





# 7

## Consider Approval of Capital Expenditure Revision

Darrell Beason, *Chief Operations Officer*

# 8

Consider Approval of Change in Calculation of Retainage with BAR Constructors, Inc. for the Joint Cedar Creek Lake Pump Station Package 2 of the Integrated Pipeline Project

*Ed Weaver, IPL Program Manager*



# Integrated Pipeline Joint Cedar Creek Lake Pump Station



# Integrated Pipeline Joint Cedar Creek Lake Pump Station

WATER SUPPLY · FLOOD PROTECTION · RECREATION



# Integrated Pipeline Joint Cedar Creek Lake Pump Station

---



# Integrated Pipeline Joint Cedar Creek Lake Pump Station

---



# Integrated Pipeline Cedar Creek Lake Pump Station



# Integrated Pipeline Cedar Creek Lake Pump Station

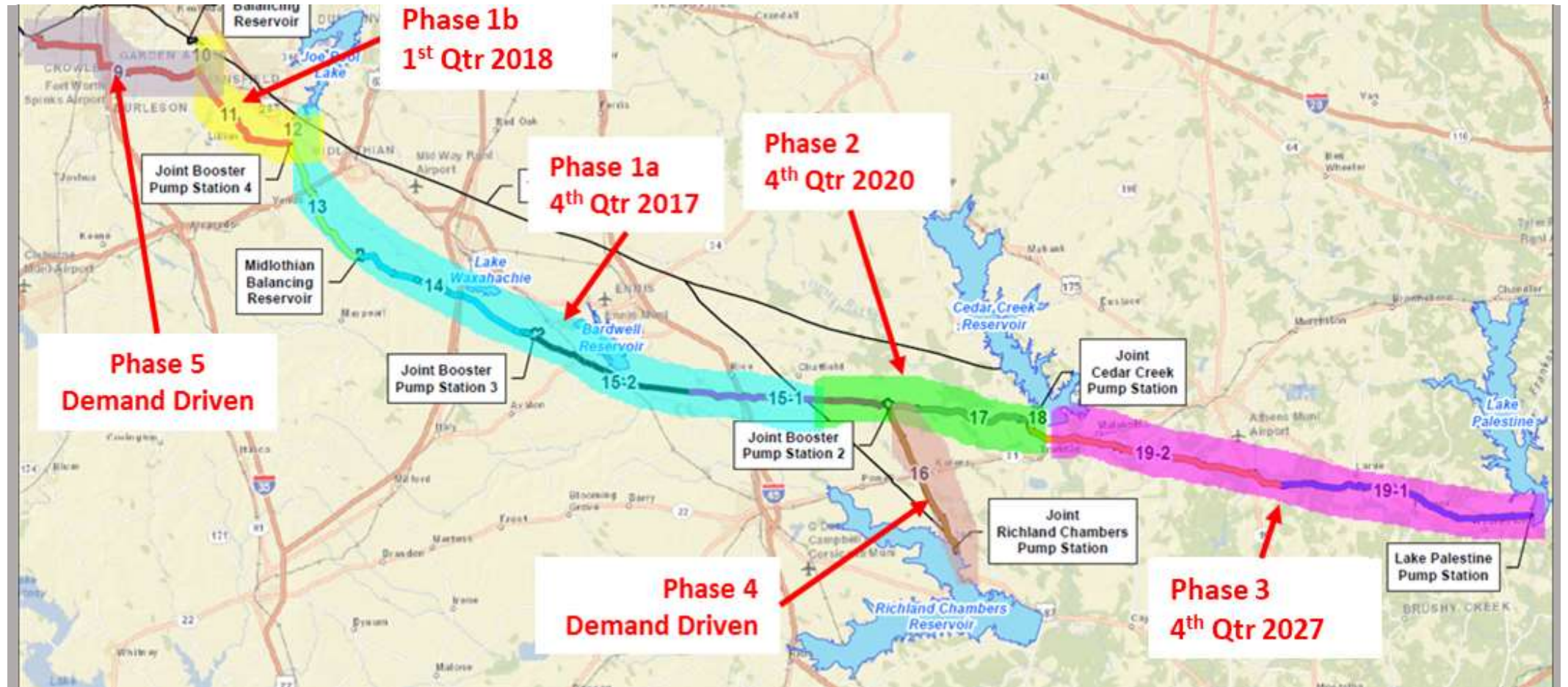


# 9

Consider Approval of Reconciliation Change Order with Lambda Construction for Joint Cedar Creek Lake Pump Station High Voltage Substation Project of the Integrated Pipeline Project

*Ed Weaver, IPL Program Manager*

# Integrated Pipeline Layout and Phases





# 10

Consider Approval of Release of Retainage, Final Payment, and Contract Closeout with Lambda Construction, Ltd. for Joint Cedar Creek Lake Pump Station High Voltage Substation Project of the Integrated Pipeline Project

*Ed Weaver, IPL Program Manager*

# Integrated Pipeline Cedar Creek Lake Pump Station High Voltage Substation

---

WATER SUPPLY · FLOOD PROTECTION · RECREATION

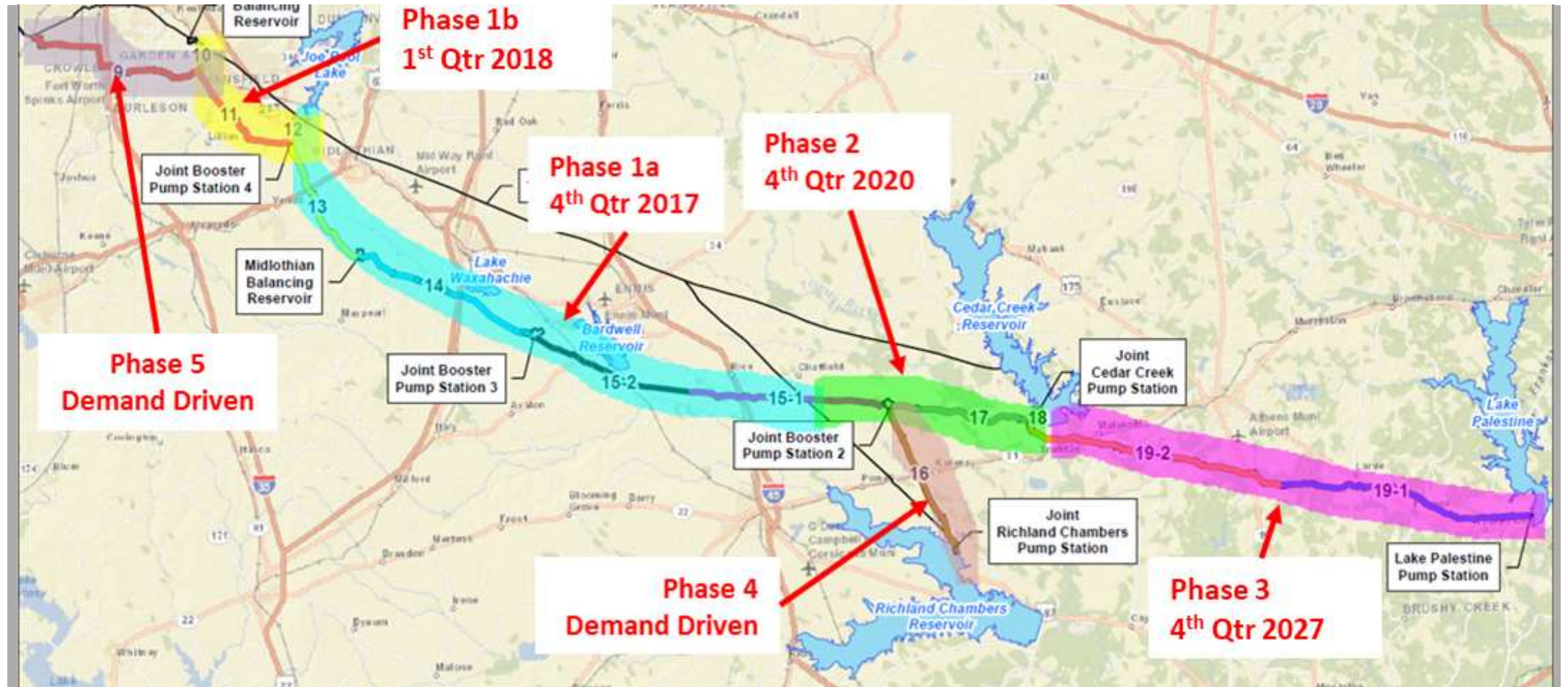


# 11

Consider Approval of Release of Retainage, Final Payment, and Contract Closeout with IPL Partners for Sections 10 and 11 of the Integrated Pipeline Project

*Ed Weaver, IPL Program Manager*

# Integrated Pipeline Layout and Phases



# Integrated Pipeline Sections 10 and 11

---

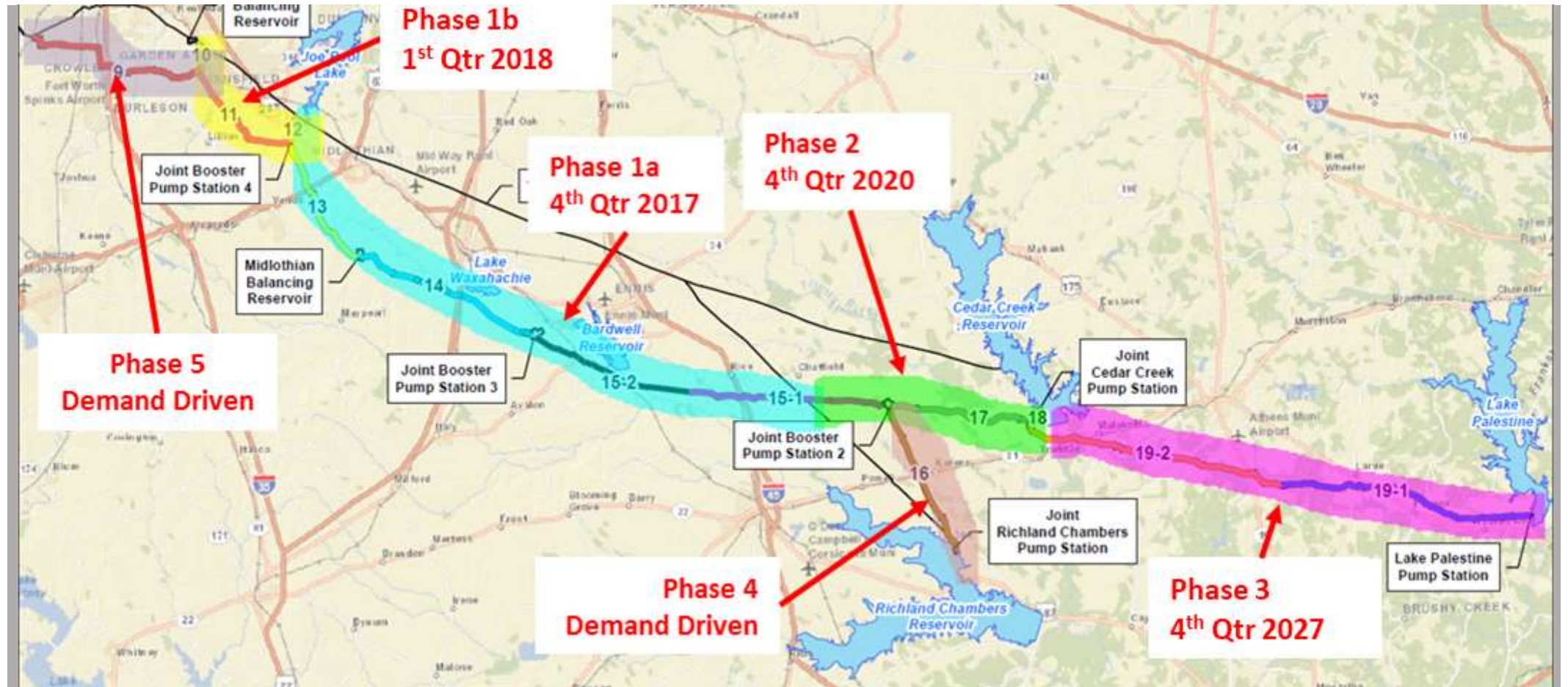


# 12

## Consider Approval of Reconciliation Change Order with Thalle Midlothian Partners for Sections 17 and 18 of the Integrated Pipeline Project

*Ed Weaver, IPL Program Manager*

# Integrated Pipeline Layout and Phases



# 13

Consider Approval of Release of Retainage, Final Payment, and Contract Closeout with Thalle Midlothian Partners for Sections 17 and 18 of the Integrated Pipeline Project

*Ed Weaver, IPL Program Manager*



# Integrated Pipeline Sections 17 and 18

---



---

# Transparency Report Update

Sandy Newby, *Chief Financial Officer*

# Comptroller Transparency Star Program

---



# Transparency Star Award Debt Obligations

---

Displays summarized debt obligations

- Governmental Fund:
  - Tax-supported debt summary
  - Bond election information
- Enterprise Fund:
  - Revenue-supported debt summary

Presents time trend of outstanding debt over the last 5 years

Provides downloadable tax rate information by year

Provides links to Comptroller website for more information on the District and Texas overall

Note: Currently the District only has Revenue-supported debt obligations.

# Transparency Star: Debt Obligations

- Overview
- Traditional Finances
- Contracts and Procurement
- Economic Development
- Debt Obligations
- Public Pensions
- Contact Information

## Debt Obligations

Debt Obligations
Time Trends
Documents and Downloadable Data

The District has the ability to issue debt for flood protection and recreation through tax supported debt obligations and for water supply through water revenue supported debt obligations.

In May of 2018, the voters in the District approved to issue tax supported debt for up to \$250,000,000 for the Panther Island/Central City project. However, there is no debt outstanding as of September 30, 2021 due to a slow down on the project to match the federal funding. Each year since that approval, the revenues from the Tax Increment Financing District # 9 & 9A have provided enough revenues to support the current operations of the project. However, if the project increases speed, the debt is approved to match the project needs.

The District uses bonds to finance its large water infrastructure projects to ensure the municipalities and other entities that purchase water have an adequate and sustainable water supply now and in the future. The largest ongoing infrastructure project with outstanding debt is the Integrated Water Supply project that is being done jointly with the Dallas Water Utilities (DWU). The District is issuing Contract Revenue Bonds on behalf of DWU and using the funds from those bonds to jointly build a pipeline and required infrastructure to a both DWU and the District's customers.

Debt Obligations	Amount	Election Date	Purpose	Amount Authorized
Total Outstanding Debt Obligations	\$1,466,320,000	05/05/2018	To finance the remaining outstanding local share of the Panther Island/Central City project.	\$250,000,000
Total Revenue Supported Debt Obligations	\$1,466,320,000			
District Revenue Supported Debt Obligations	\$1,050,650,000			
DWU Contract Revenue Supported Debt Obligations	\$415,670,000			
Total Tax Supported Debt Obligations*	\$0			
Tax Supported Debt Obligations per Capita*	\$0			
Total Lease Purchase or Lease Revenue Obligations	\$0			

\*Note: Voters approved a \$250,000,000 bond, however, at this time there is no outstanding debt related to this approval. It is still available for the project, and will be issued as needed for the

Debt Obligations
Time Trends
Documents and Downloadable Data

it

Name	File Type
c Supported and Revenue Supported Debt.xlsx	xlsx
c Rate.xlsx	xlsx
2020 Issue Detail.xlsx	xlsx

it Service is included in the annual Revenue Fund budgets. See budget reports below for the last five year's budget for debt service.

Name	File Type
22 Budget Raw Format.xlsx	xlsx
21 Budget Raw Format.xlsx	xlsx
2022 Revenue, General, and Special Projects Contingency Fund Approved Budgets.pdf	pdf
2021 Revenue and General Fund Approved Budgets.pdf	pdf
2020 Revenue and General Fund Approved Budgets.pdf	pdf
2019 Revenue and General Fund Approved Budgets.pdf	pdf

Debt Obligations
Time Trends
Documents and Downloadable Data

Revenue Supported Outstanding Debt Obligations by entity

Year	District Revenue Supported Debt	DWU Contract Revenue Supported Debt
2016	\$1,050,650,000	\$415,670,000
2017	\$1,050,650,000	\$415,670,000
2018	\$1,050,650,000	\$415,670,000
2019	\$1,050,650,000	\$415,670,000
2020	\$1,050,650,000	\$415,670,000
2021	\$1,050,650,000	\$415,670,000

Outstanding Debt Obligations by Type

Year	Total Outstanding Debt Obligations	Total Revenue Supported Debt Obligations	Total Tax Supported Debt
2016	\$1,466,320,000	\$1,466,320,000	\$0
2017	\$1,466,320,000	\$1,466,320,000	\$0
2018	\$1,466,320,000	\$1,466,320,000	\$0
2019	\$1,466,320,000	\$1,466,320,000	\$0
2020	\$1,466,320,000	\$1,466,320,000	\$0
2021	\$1,466,320,000	\$1,466,320,000	\$0

Revenue Supported Outstanding Debt Obligations per capita

Year	District Revenue Supported Debt per capita	DWU Contract Revenue Supported Debt per capita
2016	\$1,050,650,000 / 1,000,000 = \$1,050.65	\$415,670,000 / 1,000,000 = \$415.67
2017	\$1,050,650,000 / 1,000,000 = \$1,050.65	\$415,670,000 / 1,000,000 = \$415.67
2018	\$1,050,650,000 / 1,000,000 = \$1,050.65	\$415,670,000 / 1,000,000 = \$415.67
2019	\$1,050,650,000 / 1,000,000 = \$1,050.65	\$415,670,000 / 1,000,000 = \$415.67
2020	\$1,050,650,000 / 1,000,000 = \$1,050.65	\$415,670,000 / 1,000,000 = \$415.67
2021	\$1,050,650,000 / 1,000,000 = \$1,050.65	\$415,670,000 / 1,000,000 = \$415.67

<https://www.trwd.com/resources/transparency/>

---

# Year End Review Update

Sandy Newby, *Chief Financial Officer*

# GENERAL FUND

## BUDGET



Revenues



Expenditures

## ACTUAL



Revenues



Expenditures

# RECREATION

## BUDGET



Revenues

TOTAL: \$2.36 MILLION



Expenditures

TOTAL: \$3.59 MILLION

NET INVESTMENT: \$1.23 MILLION

## ACTUAL



Revenues

TOTAL: \$2.22 MILLION



Expenditures

TOTAL: \$3.29 MILLION

NET INVESTMENT: \$1.07 MILLION



# CENTRAL CITY PANTHER ISLAND PROJECT

## EXPENDITURES



Budget

Actual

## TAX INCREMENT FINANCING REVENUE



TXP Projected

Actual

# REVENUE FUND

## EXPENDITURES



Budget

Actual

## OTHER REVENUES



Budget

Actual

## WATER RATE

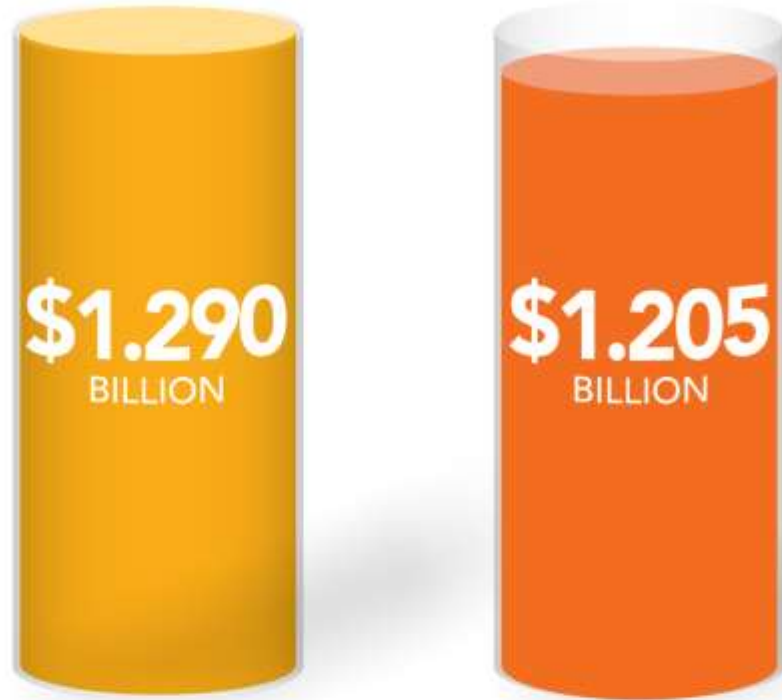


Budget

Actual

# INTEGRATED PIPELINE PROJECT

## PHASE I & II TRWD & Dallas Water Utility



Budget

Actual

ESTIMATED COST TO COMPLETE: **\$1.240**

## PHASE III Dallas Water Utility



Budgeted Bond Issues

Actual

TOTAL: **\$582 MILLION**

# STRAIGHT A'S IN FINANCE

## (ACCT. & PURCH.)

- A** - Government Finance Officer Association Award of Excellence
- A** - Achievement of Excellence in Procurement  
(by the National Procurement Institute)
- A** - AAA Bond Rating by Standard & Poors

---

# City of Dallas Partnership Update

Linda Christie, *Government Affairs Director*

# Dallas Water Conservation Program



**City of Dallas**

**Tarrant Regional Water District  
Board of Directors  
December 14, 2021**

Terry S. Lowery, Director  
Dallas Water Utilities  
City of Dallas

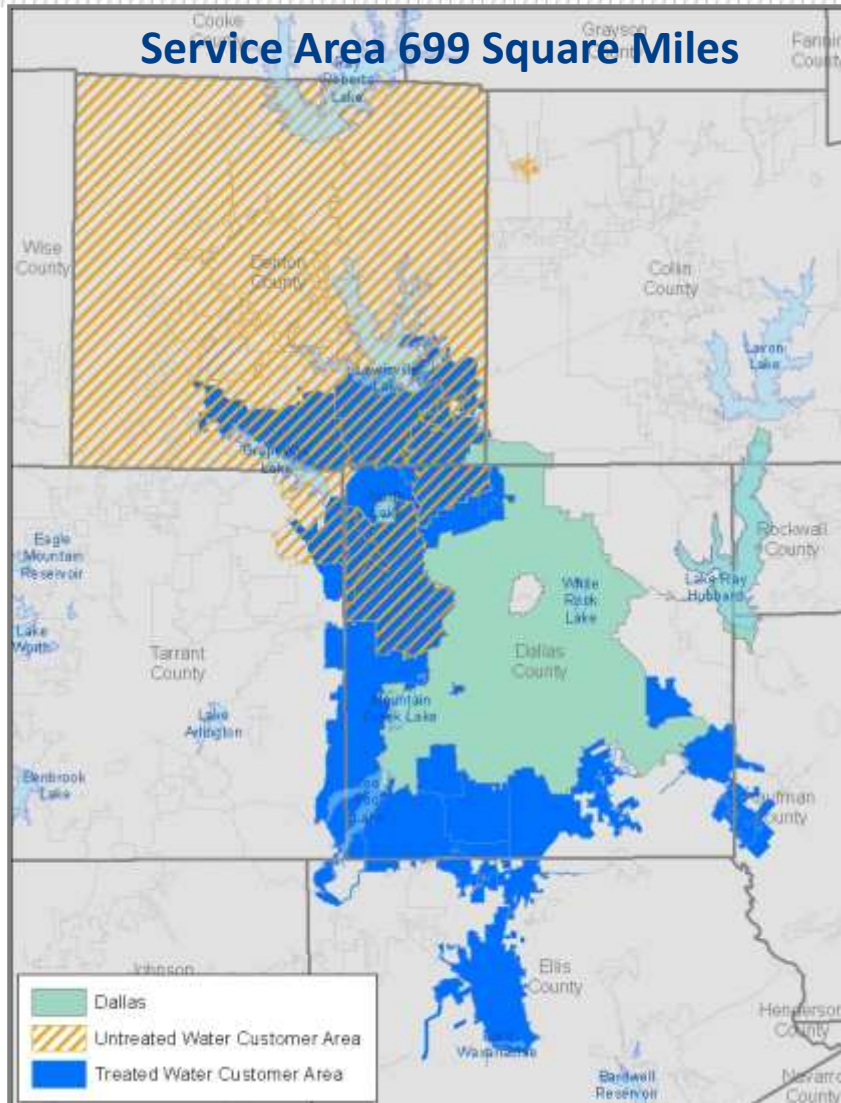
# Purpose of Briefing



- Provide brief overview of Dallas Water Utilities
- Provide an overview of Dallas' Water Conservation Program



# Dallas Water Utilities Overview






- Established by City Charter in 1881
- Regional provider of water, wastewater, stormwater and flood control services
- Fiscal Year 2020 net capital water and wastewater assets of \$5.5B
- Approximately 1,600 employees
- Combined operating and capital budgets of \$1.1B





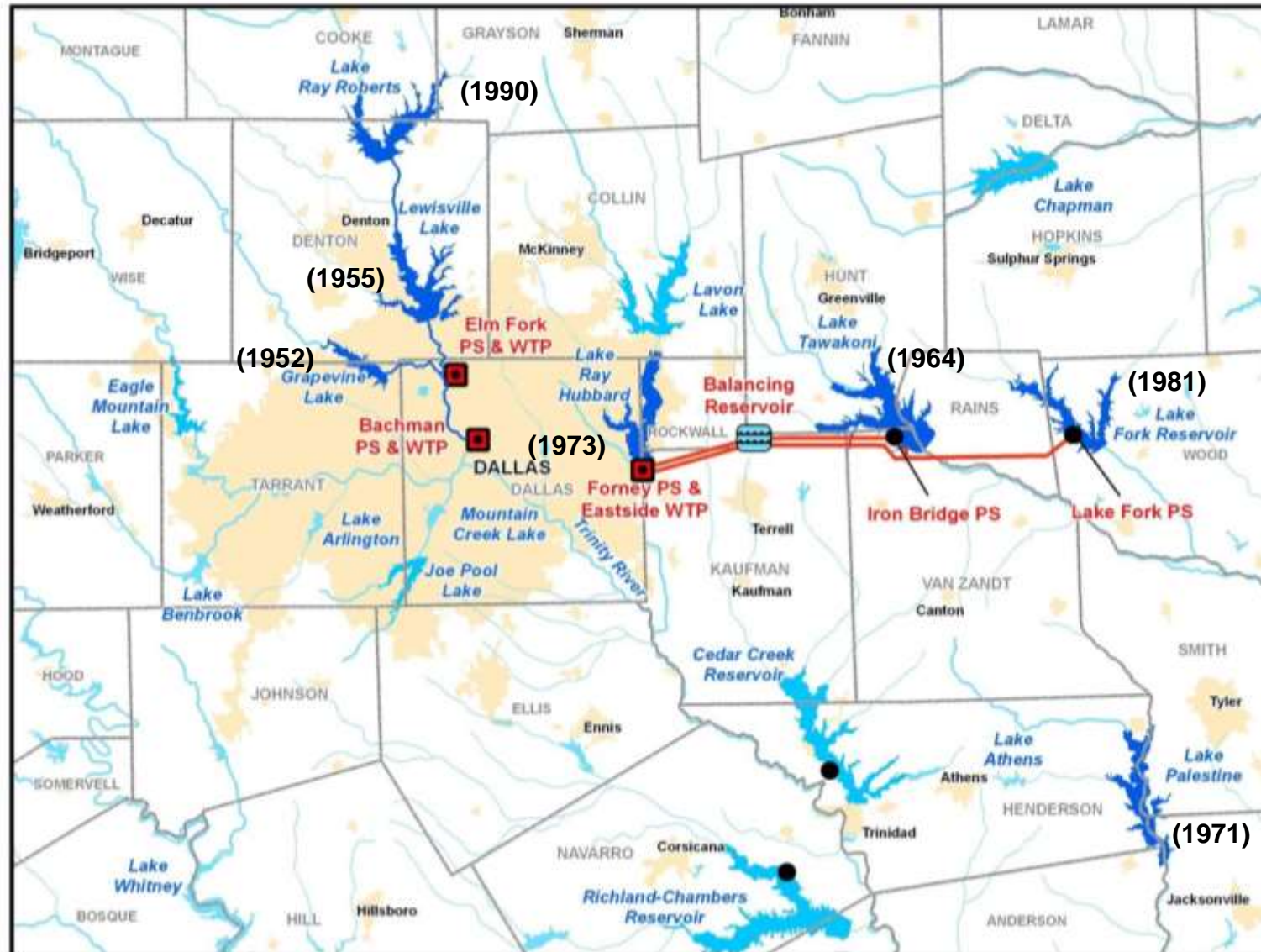
# City of Dallas One Water



	ASSETS	CUSTOMERS
	<b>WATER</b> <ul style="list-style-type: none"> <li>• 7 reservoirs, (6 connected)</li> <li>• 5,017 miles of water mains</li> <li>• 3 water treatment plants (900 MGD capacity)</li> </ul>	<b>2.5 million treated water customers</b> <ul style="list-style-type: none"> <li>• 1.3 million – Retail (City of Dallas)</li> <li>• 1.2 million – Wholesale</li> <li>• 23 wholesale treated water</li> <li>• 4 wholesale untreated water</li> </ul>
	<b>WASTEWATER</b> <ul style="list-style-type: none"> <li>• 2 wastewater treatment plants (280 MGD capacity)</li> <li>• 4,053 miles of wastewater main</li> <li>• 15 wastewater pump stations</li> </ul>	<b>320,000+ retail customer accounts</b> <ul style="list-style-type: none"> <li>• 11 wholesale wastewater</li> </ul>
	<b>STORMWATER</b> <ul style="list-style-type: none"> <li>• 8 storm water pump stations (5.7 BGD capacity)</li> <li>• 1,963 miles of storm sewers</li> <li>• 30 miles of levees</li> <li>• 39,000 acres of floodplain</li> </ul>	<b>300,000 storm water accounts</b> <ul style="list-style-type: none"> <li>• 265,979 Residential</li> <li>• 29,470 Commercial</li> </ul>



# Dallas' Regional Water Supply System



# History of Dallas' Water Conservation Program



**1981:**

Dallas began adding bill inserts to encourage customers to conserve water.



**1987:**

Plumbing retrofit program begins with low flow shower heads and toilet dams



**2001:**

Dallas City Council amended ordinance to include conservation water rates and prohibition of landscape water waste including time of day watering and the requirement of rain and freeze sensors.. Water Conservation Division created

**2002:**

Initiated extensive, ongoing multimedia local public awareness campaign.



**2006**

Water Conservation Mascot DEW joins the Water Conservation Team and augmented existing school education programs with an Environmental Education Initiative (EEI).



**2010**

EPA spotlighted Dallas' "Great Dallas Fix a Leak Roundup."



**2019:**

NTMWD joins regional media campaign with DWU and TRWD

Dallas' Approved Water Conservation Plan submitted to TCEQ, Previous submittals include 2014, 2009 and 2005.



**North Texas Municipal Water District**



**1984:**

School education and media relations



**1993:**

Water-wise demonstration garden at White Rock Pump Station.

**2005:**

Dallas City Council adopts a Water Conservation Five-Year Strategic Plan to further reduce peak demands and curb water waste. Subsequent plans in 2010 and 2015.

Annual Water Wise Landscape Tour begins.

Proactive leak detection and repair begins.



**2009**

DWU and TRWD partner on regional media campaign to minimize the potential for customer confusion by providing uniform water conservation messages to the entire media market .



**2011:**

Water Conservation Hospitality Industry Program to encourage hotels/motels and restaurants to expand efforts to save water.



**2012**

Irrigation Ordinance amended to include mandatory twice weekly maximum schedule



**2021:**

New Water Is Awesome regional campaign launched



# Achieving Water Conservation Goals



- Programs to reshape behaviors
  - Public education and outreach
  - Rebate and incentive programs
- Programs impacting structural changes
  - Water loss/leak detection
  - Main replacement program
  - Toilet replacement programs
  - ICI and irrigation audit programs



# Water Conservation Irrigation Ordinance



- Mandatory Irrigation Efficiency Scheduling
  - 2001 - Irrigation prohibited between 10 a.m. and 6 p.m.
  - 2012 - Maximum Twice Weekly Watering Schedule
- Prohibited Reckless Irrigation Behaviors
  - Watering with broken, misaligned or missing heads
  - Watering causing excessive runoff
  - Watering impervious surfaces (sidewalks, streets, etc.)
  - Watering during precipitation or freezing temperatures
  - Rain/freeze sensors required on all automatic systems
- Enhanced Enforcement



# Public Education and Outreach



- Public Awareness Campaign
  - Regional Campaign with TRWD- 'Water Is Awesome' [www.WaterIsAwesome.com](http://www.WaterIsAwesome.com)
  - Local Campaign- 'Save Water. Nothing Can Replace It' [www.SaveDallasWater.com](http://www.SaveDallasWater.com)
- Environmental Education Initiative K-12
  - 10,772 students reached in FY2021
- Water-Wise Landscape Tour
  - Currently in its 27th year
- Water-Wise Seminars Year-Round



# Rebate and Incentives



- City Leadership and Commitment Grant
- Toilet Voucher and Rebate Program
- Free Irrigation Audits
- Industrial, Commercial, and Institutional (ICI) Surveys and Rebates
- Minor Plumbing Repair Program



**I Have A New Throne For My Home!**

Toilets use the most water indoors, consuming up to 7,200 gallons of water per person each year. New technologies have greatly improved the performance of low-flow toilets. Installing one in your home can save 4,320 gallons of water per person each year.



Give your bathroom the royal treatment. If you are a Dallas Water Utilities customer you may qualify for a \$90 voucher through our Throne for Your Home Toilet Voucher Program, (up to two vouchers per household) towards the purchase of a low-flow or ultra low-flow toilet. Visit [www.SaveDallasWater.com](http://www.SaveDallasWater.com) to print out an application for your voucher and mail it in today!

**IT'S ALL IN A DROP!**

[WWW.SAVEDALLASWATER.COM](http://WWW.SAVEDALLASWATER.COM)



# Distribution System Enhancements



- Pipeline Replacement Program
- Leak Detection and Repair
- Universal Metering
- Meter Testing and Replacement





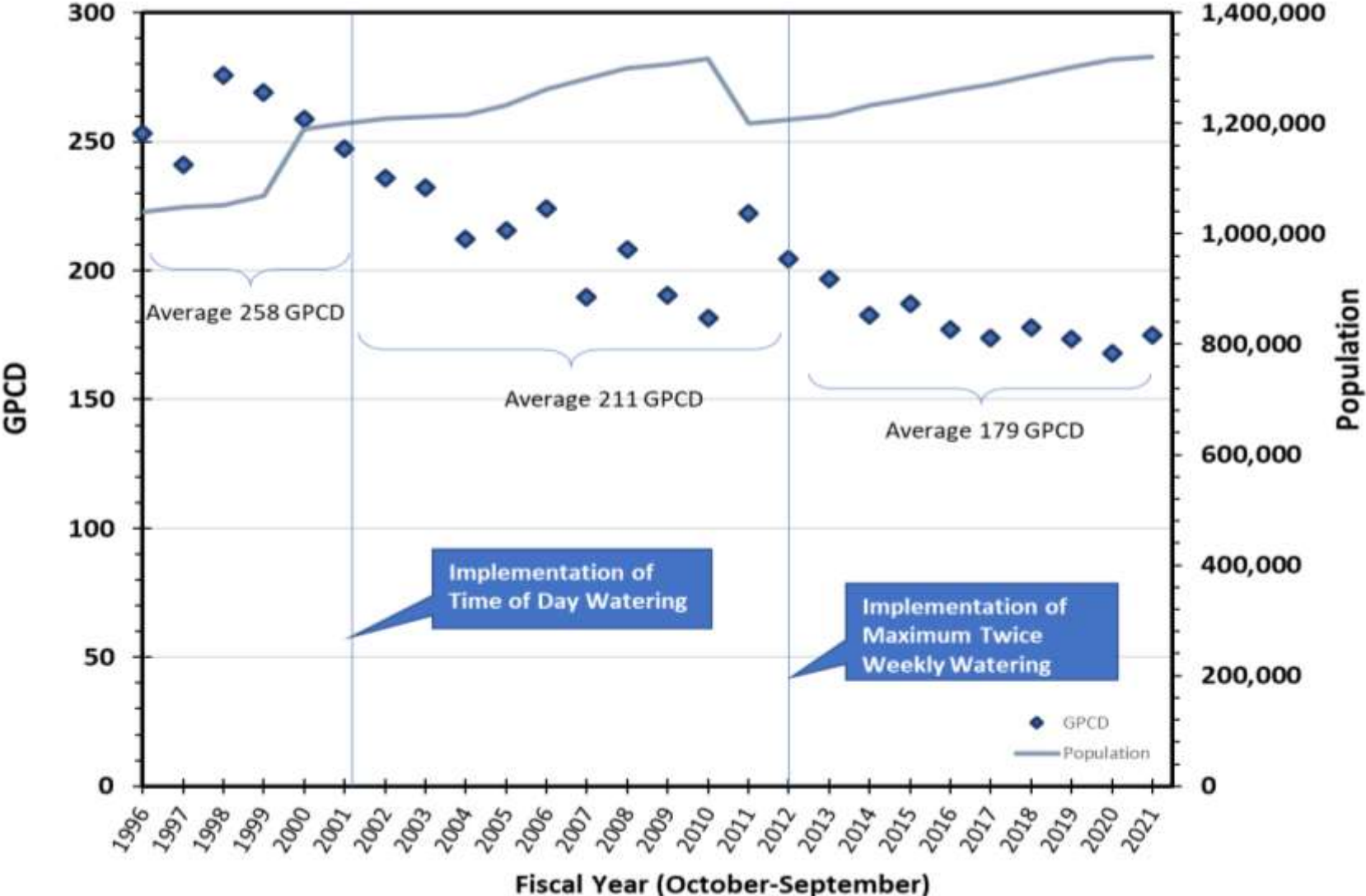
# AWARDS



- Wyland Foundation National Mayor's Challenge
  - Won Challenge for Water Conservation in 2017, 2018, 2020, and 2021
  - Named most "Water Wise" large city in the United States
- 2009 entered into WaterSense® Partnership with Environmental Protection Agency (EPA)
- 2010 EPA WaterSense® Program selects "The Great Dallas Fix a Leak Roundup" to spotlight national Fix a Leak Week
- 2014 Texas AWWA – Section Conservation Award, Large Utility
- 2014 North Texas Recycling Leadership Awards – Finalist: Public Education and Outreach
- 2016 Texas Environmental Excellence Award – Water Conservation
- 2017 Green Awards, Celebrating Efforts to Reduce, Reuse and Recycle – Honorable Mention: Excellence in Environmental Education
- Texas Water Conservation Scorecard
  - 2016 - Score 65
  - 2020 - Score 75, Ranked in the top 7 utilities in the Large and Medium Size Retail Water Utilities



# Impacts of Water Conservation Program



# Questions



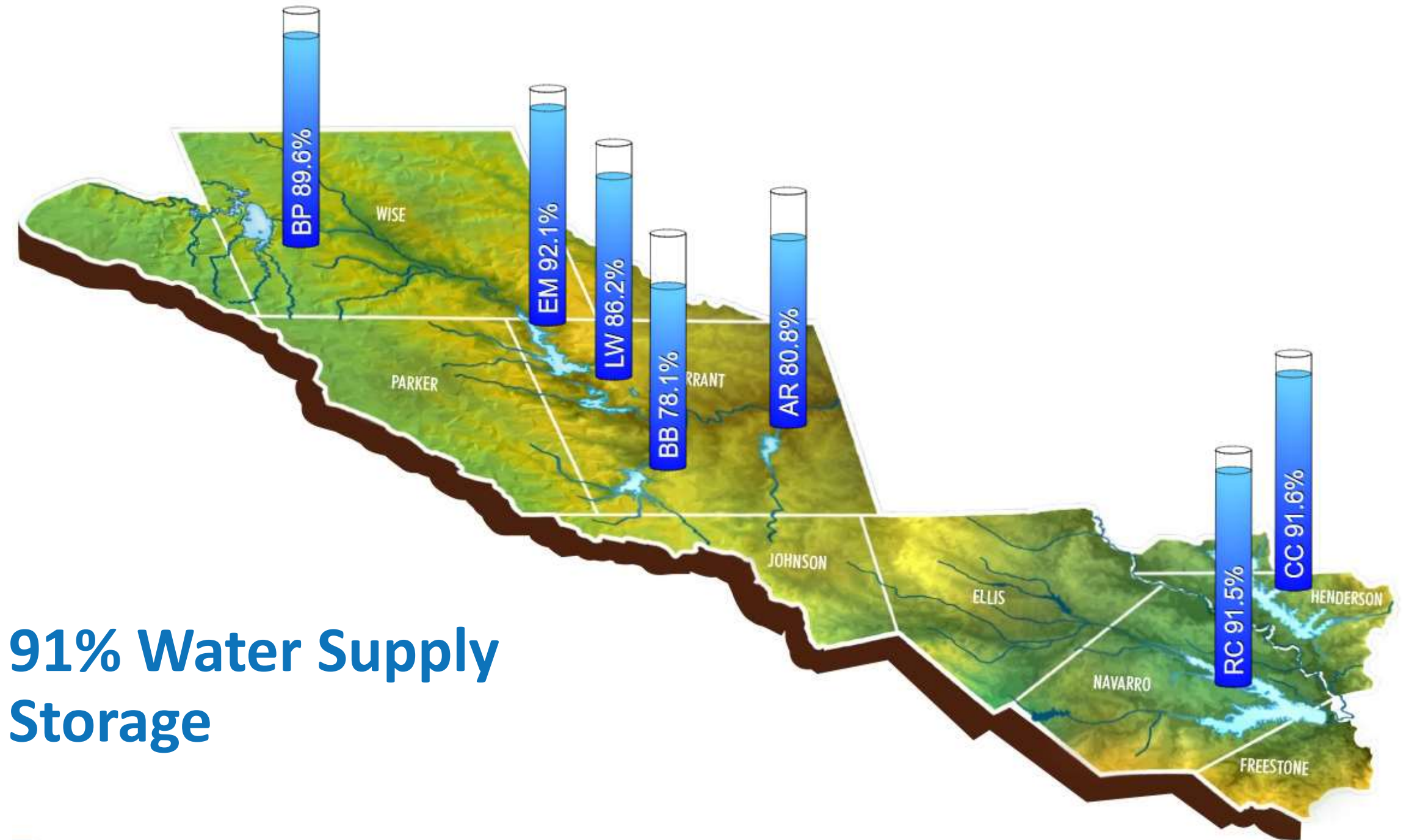
2019 Water Conservation  
Art Contest  
T-Shirt Grand Prize Winner  
Arim Jun



---

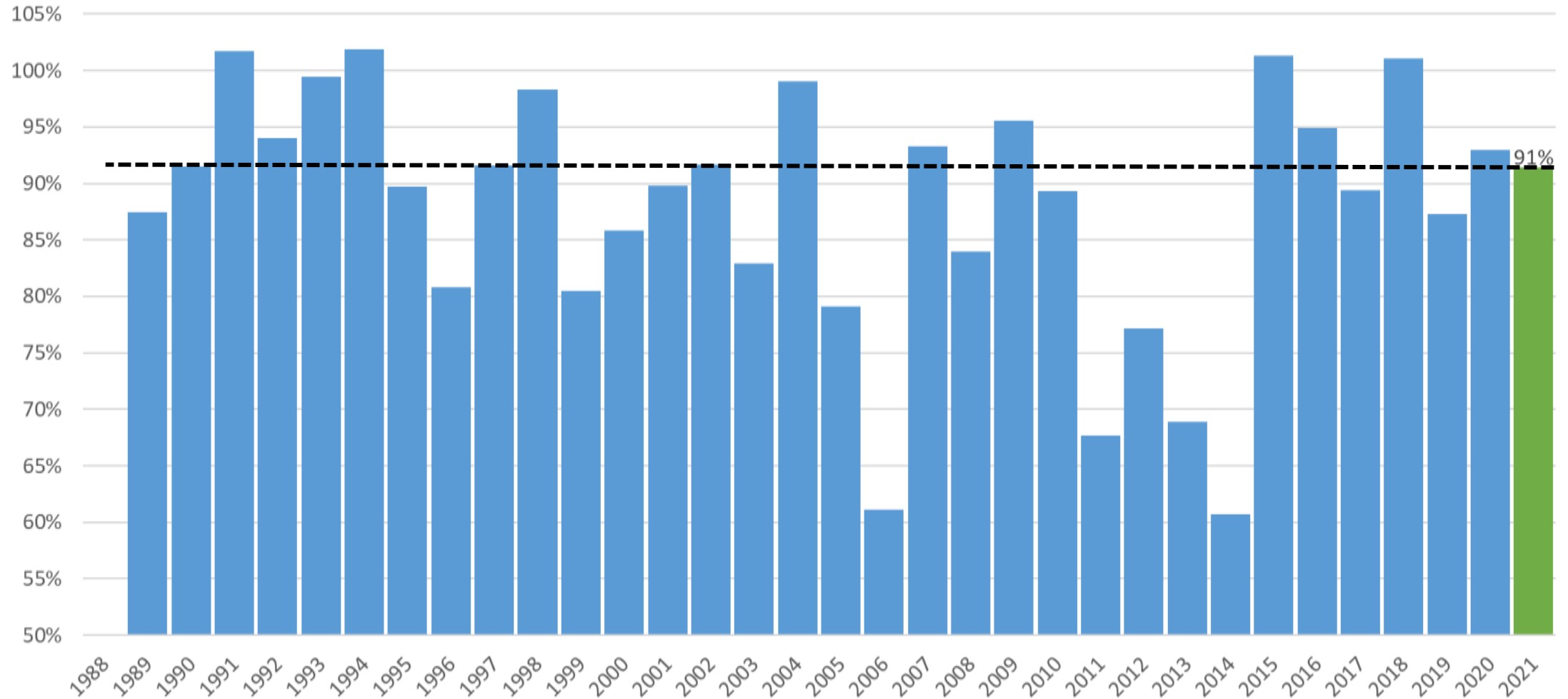
# Water Resources Update

Rachel Ickert, *Chief Water Resources Officer*



# 91% Water Supply Storage

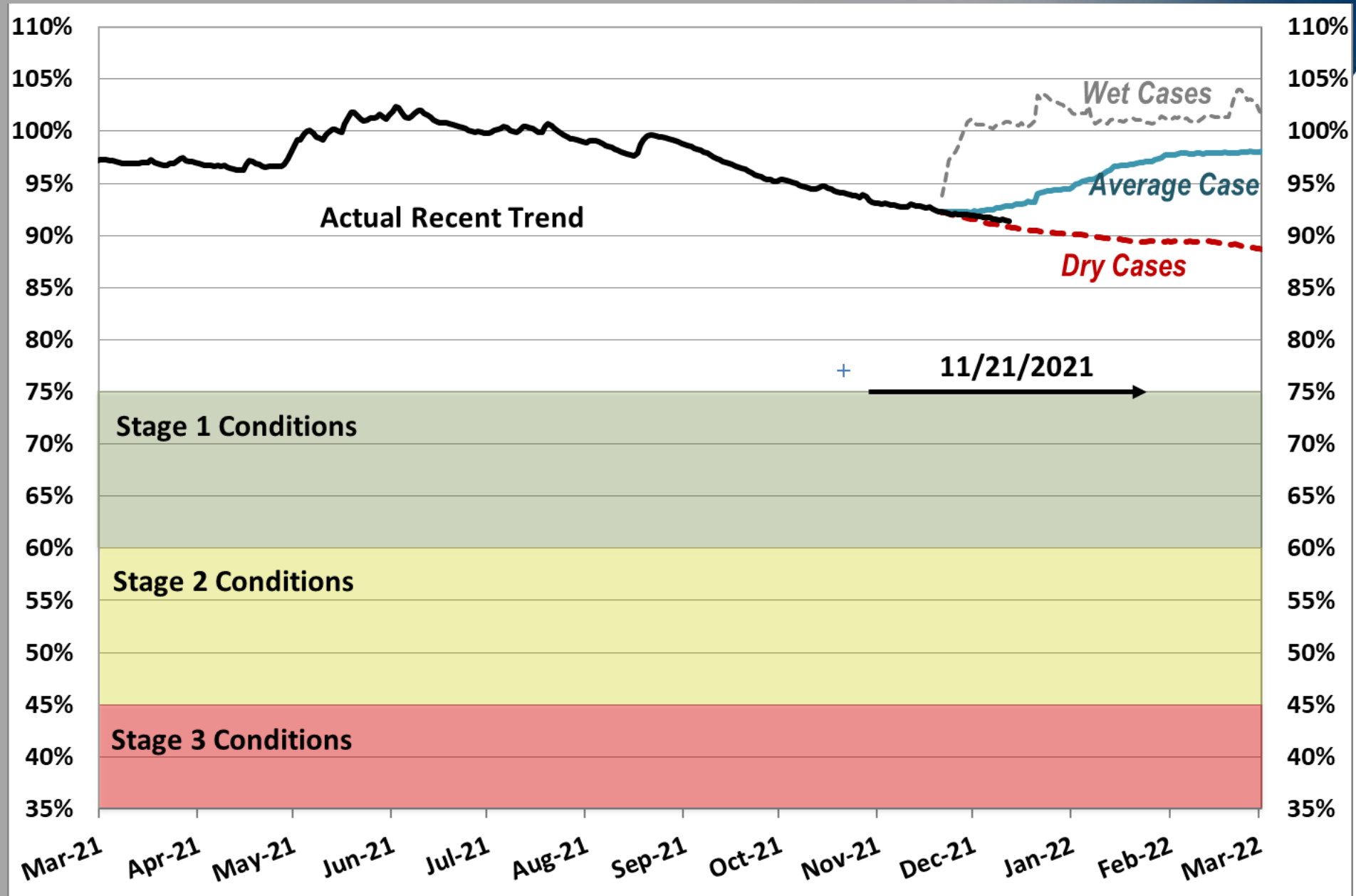
# Percent of Total Storage on December 13



\*1988 – All four TRWD reservoirs operational

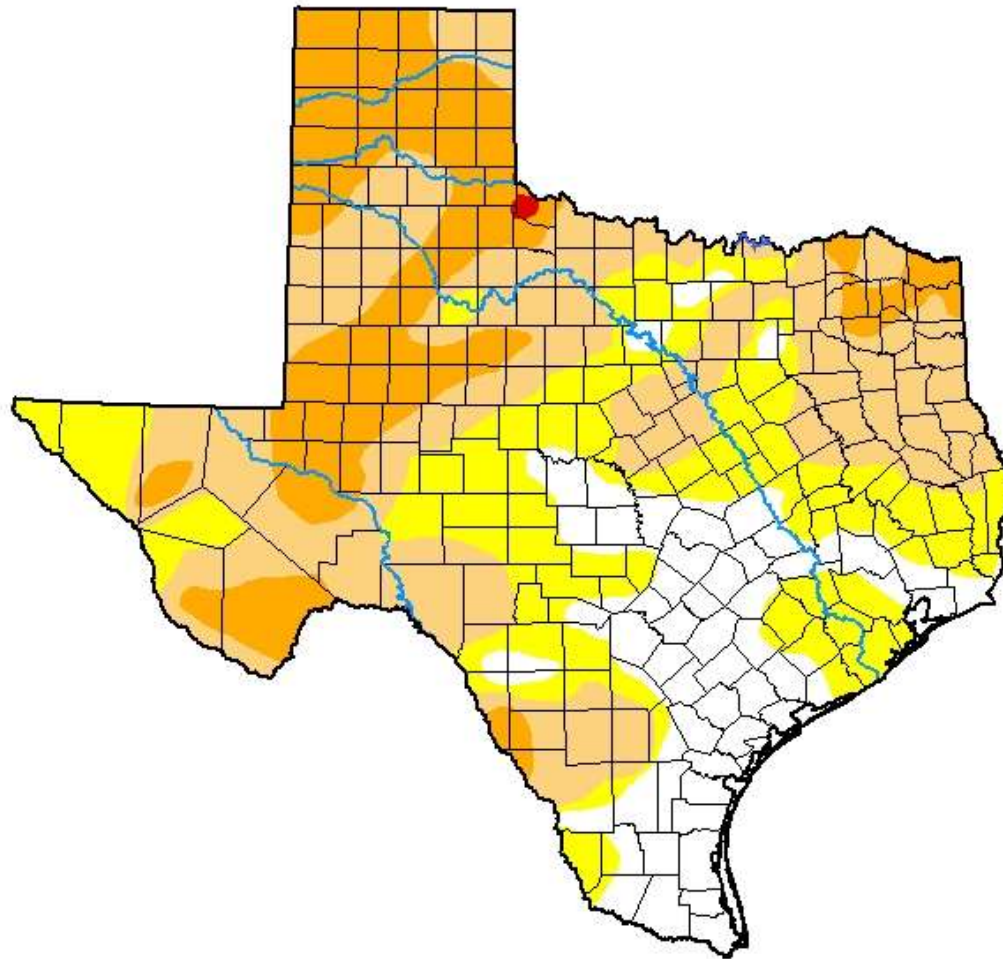


# Projected Water Supply Storage



# U.S. Drought Monitor Texas

**December 7, 2021**  
(Released Thursday, Dec. 9, 2021)  
Valid 7 a.m. EST



*Drought Conditions (Percent Area)*

	None	D0-D4	D1-D4	D2-D4	D3-D4	D4
<b>Current</b>	18.80	81.20	55.01	20.05	0.14	0.00
<b>Last Week</b> <i>11-30-2021</i>	28.64	71.36	49.01	17.09	0.00	0.00
<b>3 Months Ago</b> <i>09-07-2021</i>	89.25	10.75	0.48	0.00	0.00	0.00
<b>Start of Calendar Year</b> <i>12-29-2020</i>	8.80	91.20	81.11	50.33	30.09	13.03
<b>Start of Water Year</b> <i>09-28-2021</i>	45.57	54.43	7.26	0.27	0.00	0.00
<b>One Year Ago</b> <i>12-08-2020</i>	5.22	94.78	79.18	45.18	25.16	13.03

Intensity:



*The Drought Monitor focuses on broad-scale conditions. Local conditions may vary. For more information on the Drought Monitor, go to <https://droughtmonitor.unl.edu/About.aspx>*

Author:

David Simeral  
Western Regional Climate Center





# Rainfall Forecast



## LEGEND

- 0.01 - 0.1 inches
- 0.1 - 0.25 inches
- 0.25 - 0.5 inches
- 0.5 - 1 inches
- 1 - 1.5 inches
- 1.5 - 2 inches
- 2 - 3 inches
- 3 - 4 inches
- 4 - 5 inches
- 5 - 6 inches
- 6 - 8 inches
- 8 - 10 inches
- 10 - 15 inches
- 15 - 20 inches
- 20 - 30 inches
- > 30 inches

**Note on QPF** - QPFs depict the amount of liquid precipitation expected to fall during a specified time period in the future. Because precipitation can vary significantly over short distances, QPFs are reported as the expected "areal average" on a 20-kilometer (12.4 mile) grid. Several factors contribute to QPF estimates, including the current state of the atmosphere, modeled pressure systems, satellite trends, and manual adjustments made by forecasters.

15DEC2021 (WED) - 19DEC2021 (SUN) Duration: 5 Days

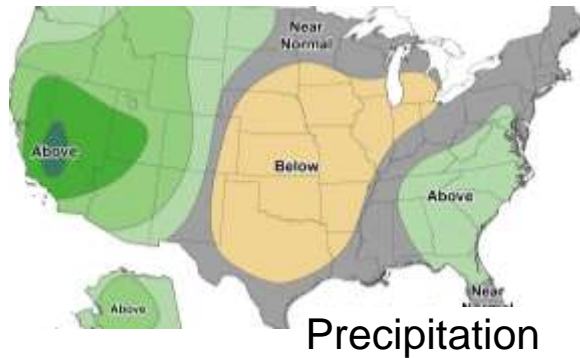
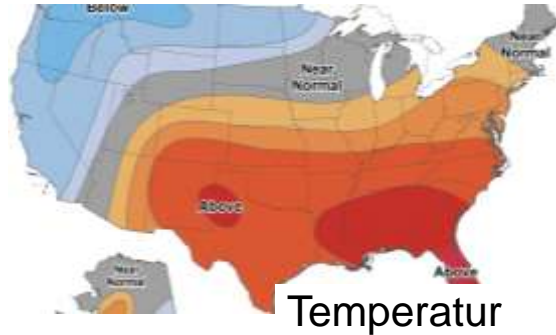


## Main Takeaway

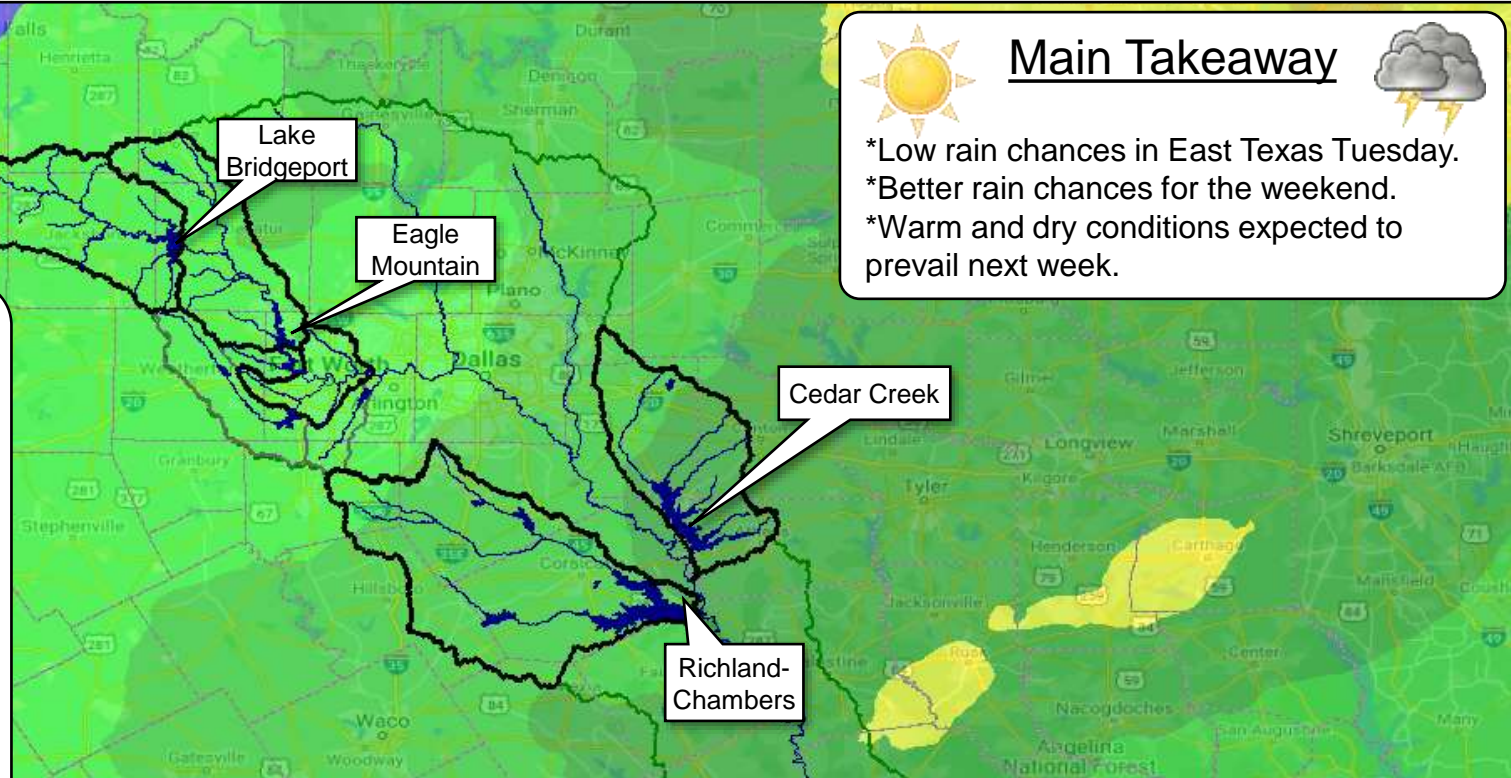


- \*Low rain chances in East Texas Tuesday.
- \*Better rain chances for the weekend.
- \*Warm and dry conditions expected to prevail next week.

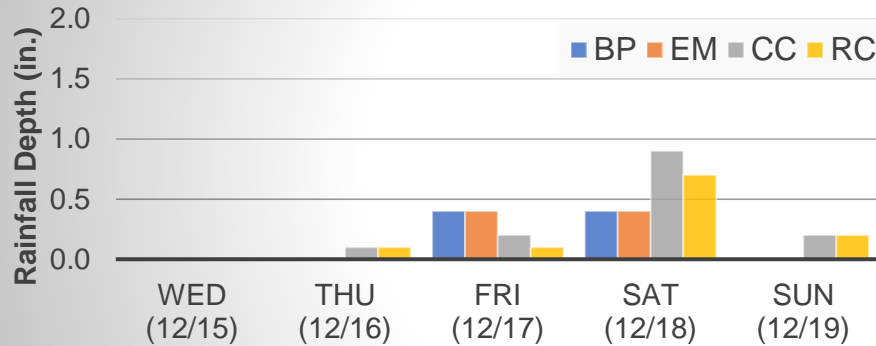
**8 to 14 Day Outlook**  
Above normal temperatures and below normal rainfall.  
(Dec 20 - 26)



Precipitation forecast is obtained from NOAA's NWS and provided by the Weather Prediction Center (WPC). The data is processed and displayed using USACE Met-Vue software



## Daily Forecasted Rainfall Totals



Reservoir	Forecast Total (in.)
BP	0.8
EM	0.8
CC	1.4
RC	1.1

NWS Forecast Time: 2021-12-13 1200 GMT



---

# Social Responsibility Update

Dan Buhman, *General Manager*



# 15

## Executive Session

# 16

Consider Approval and Adoption of the Following Proposed Board Policies Effective January 1, 2022: Arbitrage Policy, Budget Policy, Capital Asset Policy, General Fund Reserve Policy, Investment Policy, Other Post-Employment Benefits Funding Policy, Public Information Policy, Records Management Policy

*Lisa Cabrera, Chief Human Resources Officer*

# BOARD GOVERNANCE POLICIES

---

This is how the Board governs itself.

**COMPLETED NOV. 1**



## BOARD-ADOPTED POLICIES

---

This is how the Board exercises its governance over operations of the District.

- Financial
- Public Information
- Records Management
- Human Resources
- IT
- Operations



## ADMINISTRATIVE PROCEDURES

---

This is how Staff executes Board-adopted Policies.

- Presented to the Board
- Posted to the website

# 17

## Discussion of the Following Proposed Board Policies: Employment Practices; Employee Standards of Conduct and Code of Ethics

Lisa Cabrera, *Chief Human Resources Officer*

# BOARD GOVERNANCE POLICIES

This is how the Board governs itself.

**COMPLETED NOV. 1**



## BOARD-ADOPTED POLICIES

This is how the Board exercises its governance over operations of the District.

- Financial
- Public Information
- Records Management
- Human Resources
- IT
- Operations



## ADMINISTRATIVE PROCEDURES

This is how Staff executes Board-adopted Policies.

- Presented to the Board
- Posted to the website

# 18

Consider Approval of Acceptance of Donation of Land Located in Block 8, North Fort Worth Addition to the City of Fort Worth, Tarrant County, Texas

*Woody Frossard, Environmental Director*



# 19

Consider Approval of Authorization to Acquire Land in the J.T. Hobbs Survey, Abstract No. 806, City of Fort Worth, Tarrant County, Texas

Steve Christian, *Real Property Director*



# 20

## Future Agenda Items





**21**

**Next Board Meeting  
January 18, 2022**





17

Adjourn v